



CREATIVE PIPING SOLUTIONS

Innovating The Piping Industry | www.creativepiping.com

Bull Plugs Dimension Specifications



Creative Piping Solutions (CPS) is leading manufacturers of Bull Plugs, Bull Plugs for Oil and Gas Industries, Bull Plug Dimensions, API 6A Bull Plug Pipe Fittings, BS3799 Hex Bull Plugs, ANSI B16.11 NPT Threaded Bull Plugs, and High-Pressure Screwed Bull Plugs

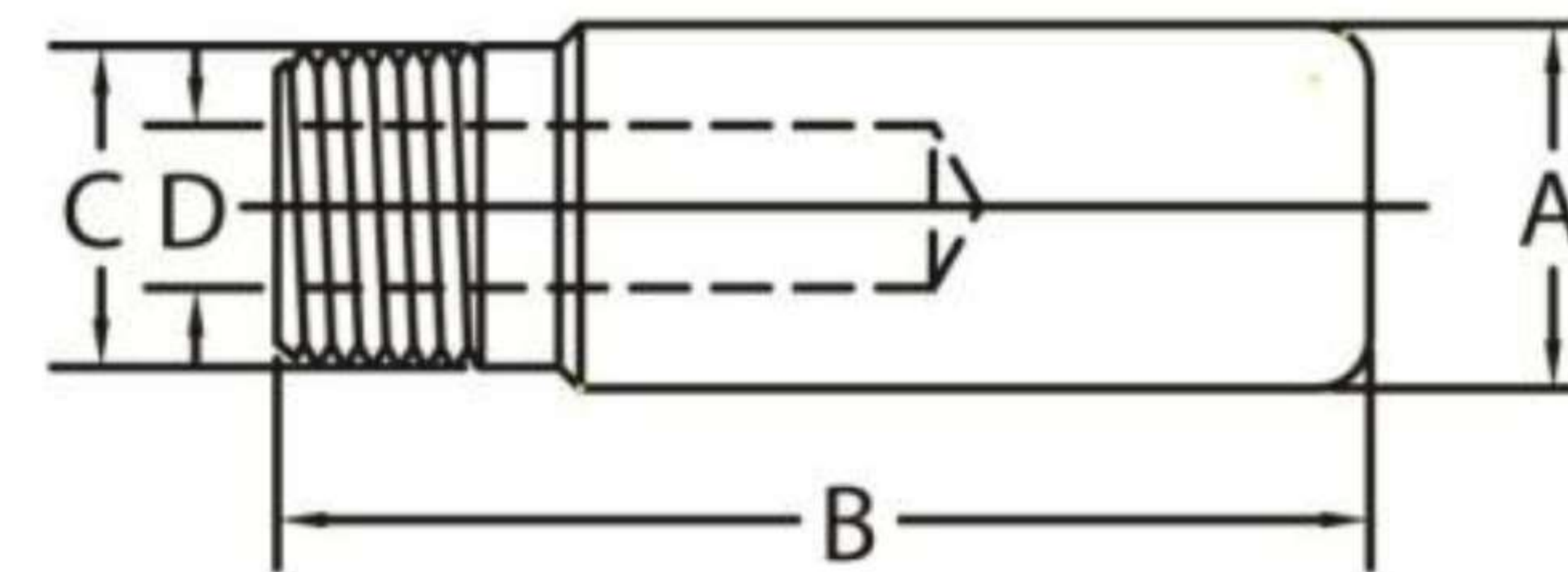
We are a trusted and reputable manufacturer specializing in the production of Bull Plugs designed for a wide range of industrial applications, with a strong focus on the oil and gas industry.

PRODUCT CATALOG

BULL PLUGS

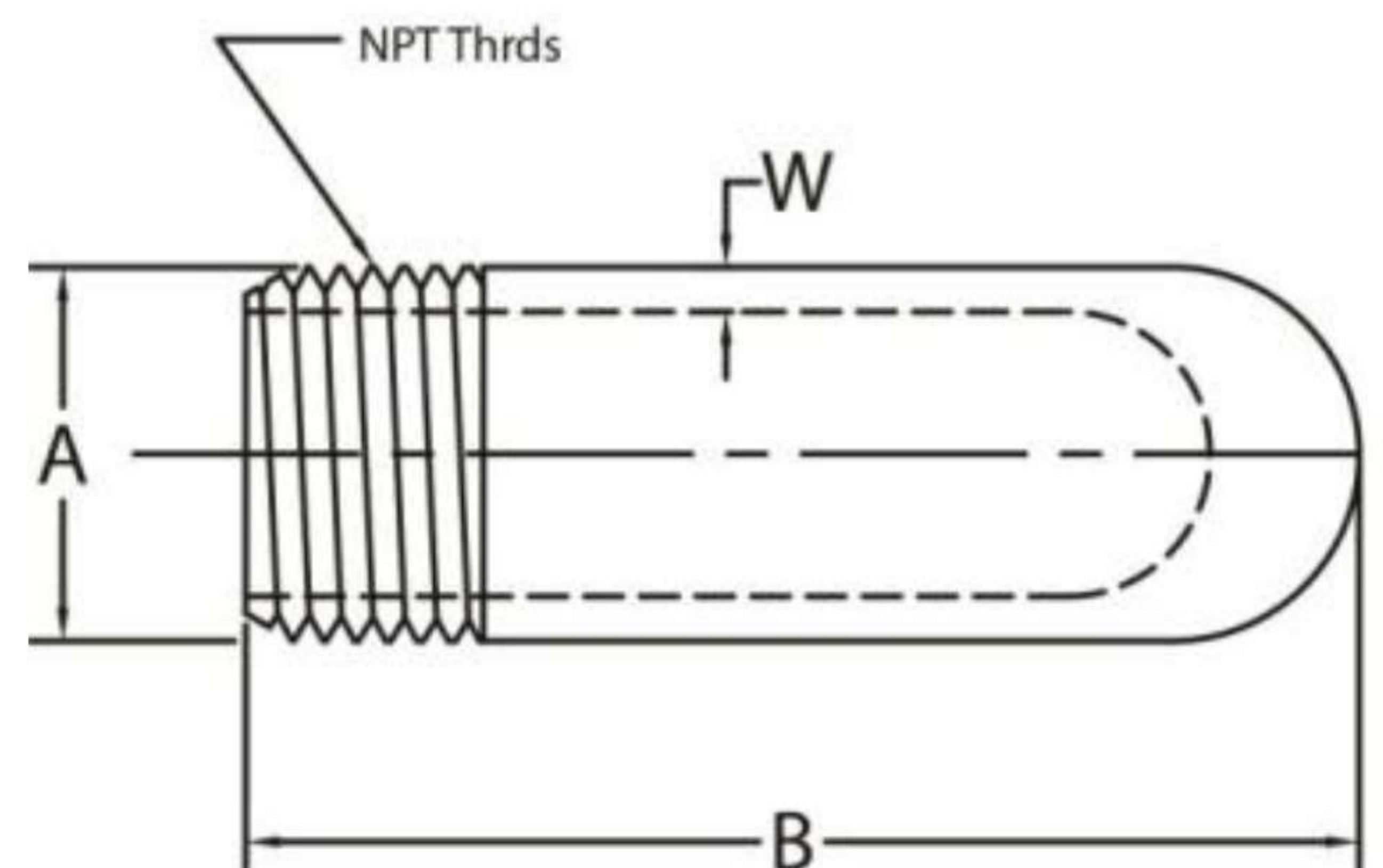
Bull Plugs Round Threaded	1
Bull Plugs Hollow Threaded	1
Bull Plugs Hollow Threaded Tapped	1
Bull Plugs Hex Threaded	2
Bull Plugs Hollow Welding Bevel	2
Bull Plugs Hollow API 8RD Threads	2





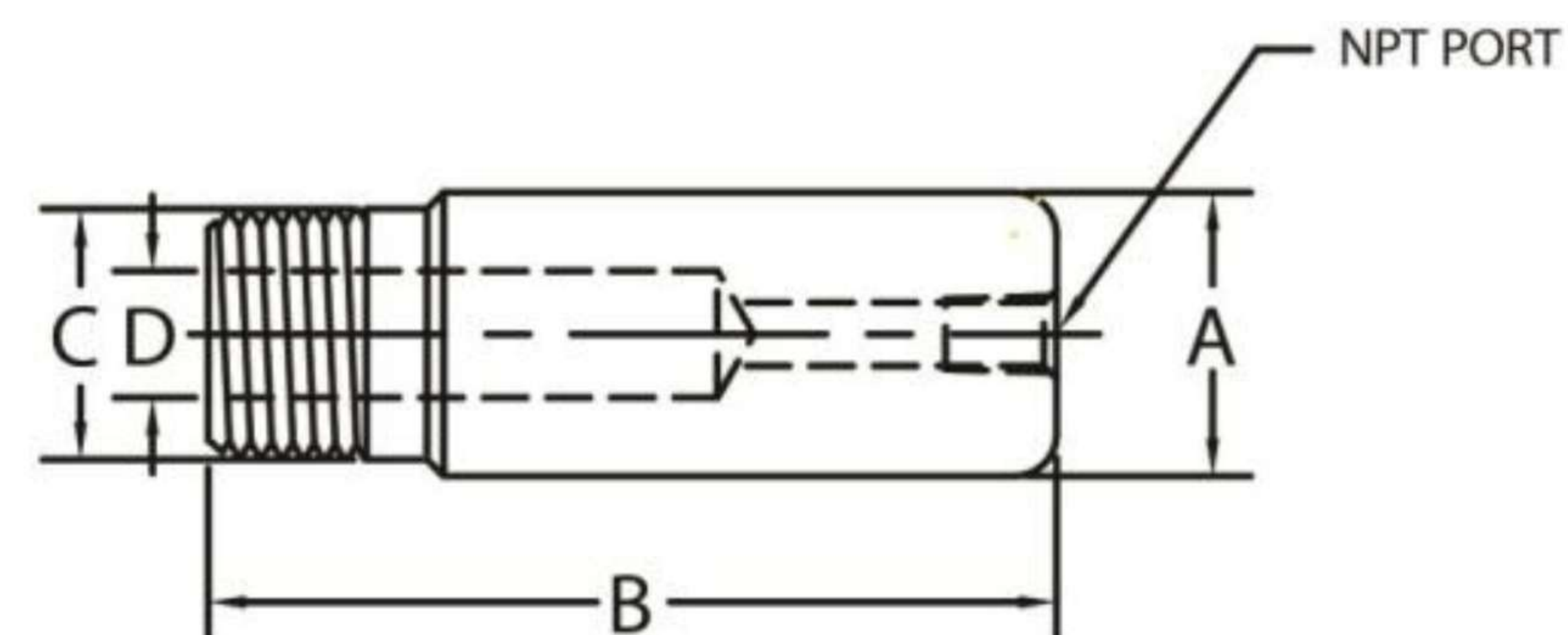
Round, Threaded

Pipe Size	A	B	C	D				Wt. Ea.			
				STD	XH	160	XXH	STD	XH	160	XXH
1/8	0.437	2.000	0.405	0.250	0.218	-	-	-	-	-	-
1/4	0.562	2.000	0.540	0.343	0.281	-	-	-	-	-	-
3/8	0.750	2.250	0.675	0.468	0.406	-	-	-	-	-	-
1/2	0.875	2.500	0.840	0.609	0.531	-	-	-	-	-	-
3/4	1.062	2.750	-	0.812	0.718	0.609	0.421	-	-	-	-
1	1.312	3.000	-	1.031	0.937	0.781	0.593	-	-	-	-
1-1/4	1.687	3.250	-	1.343	1.250	1.140	0.875	-	1.00	1.50	1.50
1-1/2	2.000	3.500	1.900	1.593	1.484	1.312	1.062	-	1.17	2.00	2.00
2	2.375	4.000	-	2.000	1.937	1.671	1.484	2.25	2.50	3.50	3.50



Hollow, Threaded

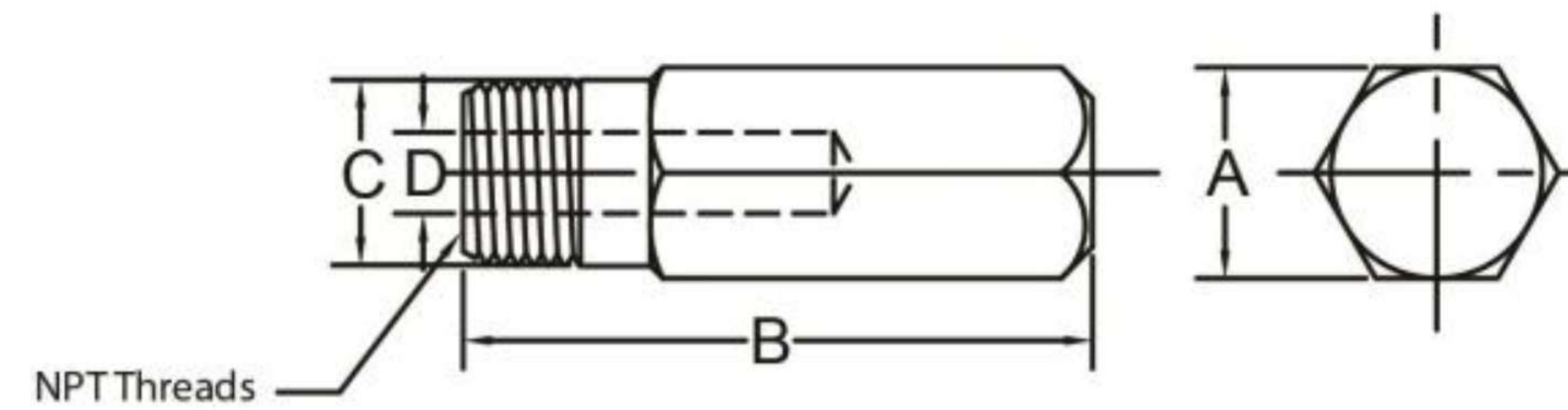
Pipe Size	A	B	C	W				Wt. Ea.			
				STD	XH	160	XXH	STD	XH	160	XXH
2	2.375	4.000	-	0.154	0.218	0.344	0.436	2.25	2.50	3.50	3.50
2-1/2	2.875	5.000	-	0.203	0.276	0.375	0.552	3.00	3.50	-	8.00
3	3.500	6.000	-	0.216	0.300	0.438	0.600	4.50	6.00	-	11.00
4	4.500	7.000	-	0.237	0.337	0.531	0.674	7.50	10.00	-	18.00



Hollow, Threaded, Tapped

Pipe Size	A	B	C	D			Wt. Ea.		
				STD	XH	XXH	STD	XH	XXH
1	1.312	3.000	1.312	1.031	0.937	0.593	-	0.67	1.00
1-1/4	1.687	3.250	1.660	1.343	1.250	0.875	-	1.00	1.50
1-1/2	2.000	3.500	1.900	1.593	1.484	1.062	-	1.17	2.00
2	2.375	4.000	2.375	2.000	1.937	1.484	2.25	2.50	5.00

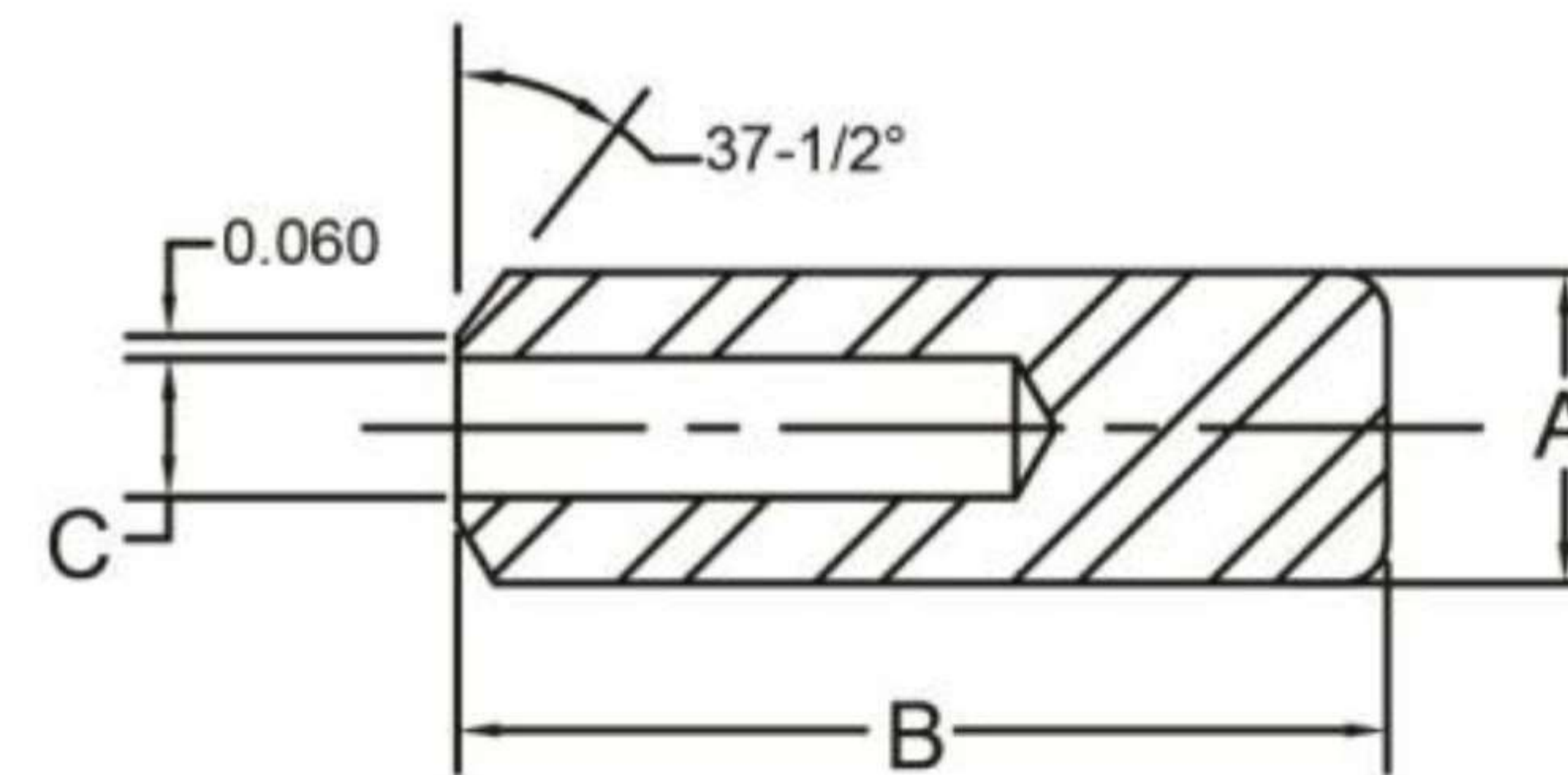
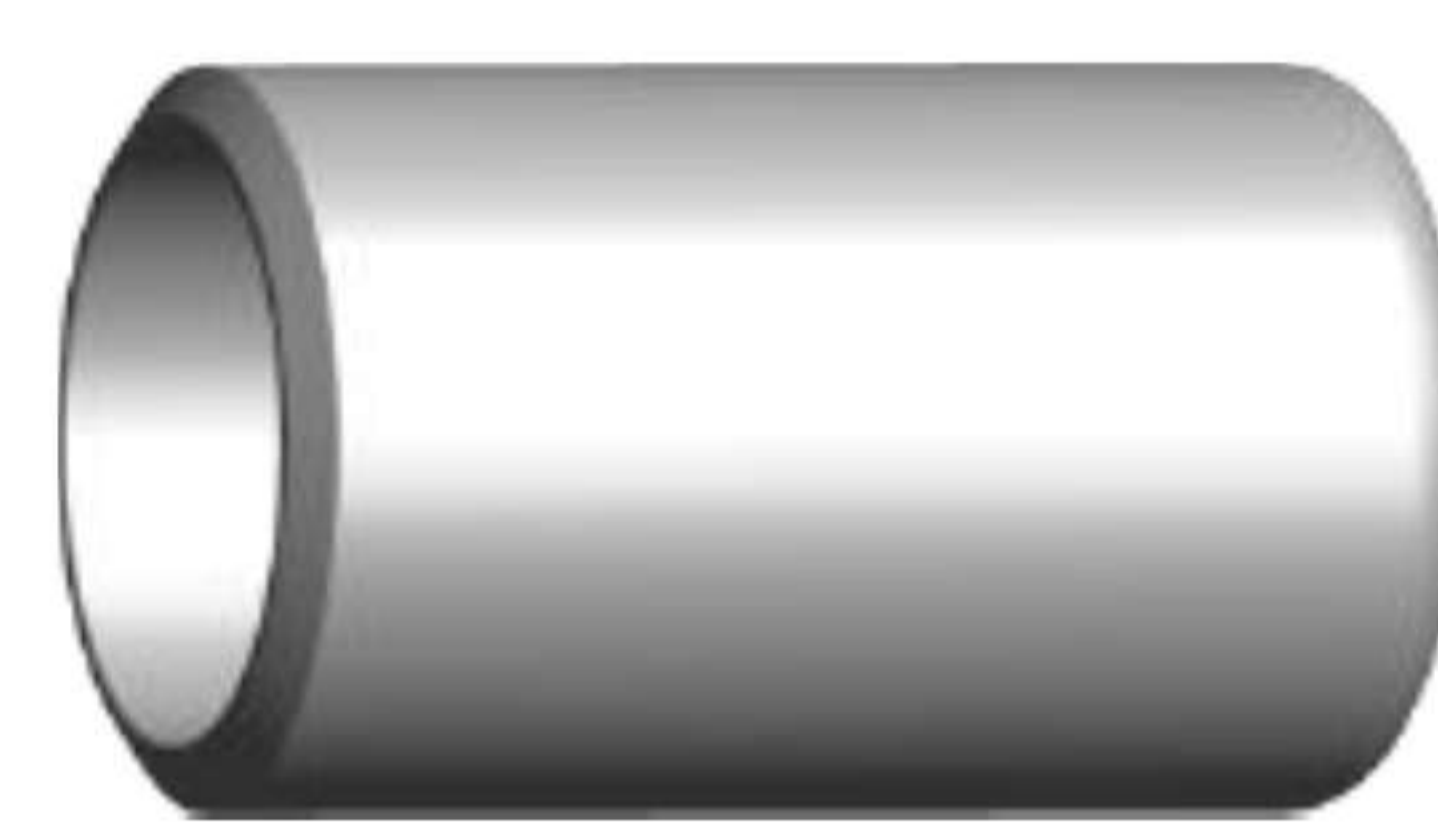
Note: NPT Ports Available in 1/4" or 1/2" Sizes
Electro-Zinc Plated



Hex, Threaded

Pipe Size	A	B	C	D			Wt. Ea.		
				XH	160	XXH	XH	160	XXH
1/4	0.625	2.000	0.540	0.581	0.218	0.156	0.11	0.40	0.40
3/8	0.875	2.250	0.675	0.406	0.328	0.218	0.14	-	-
1/2	0.875	2.500	0.840	0.531	0.437	0.250	0.33	0.50	0.50
3/4	1.062	2.750	1.050	0.718	0.609	0.421	0.50	0.75	0.75
1	1.375	3.000	1.315	0.937	0.781	0.593	0.67	1.00	1.00

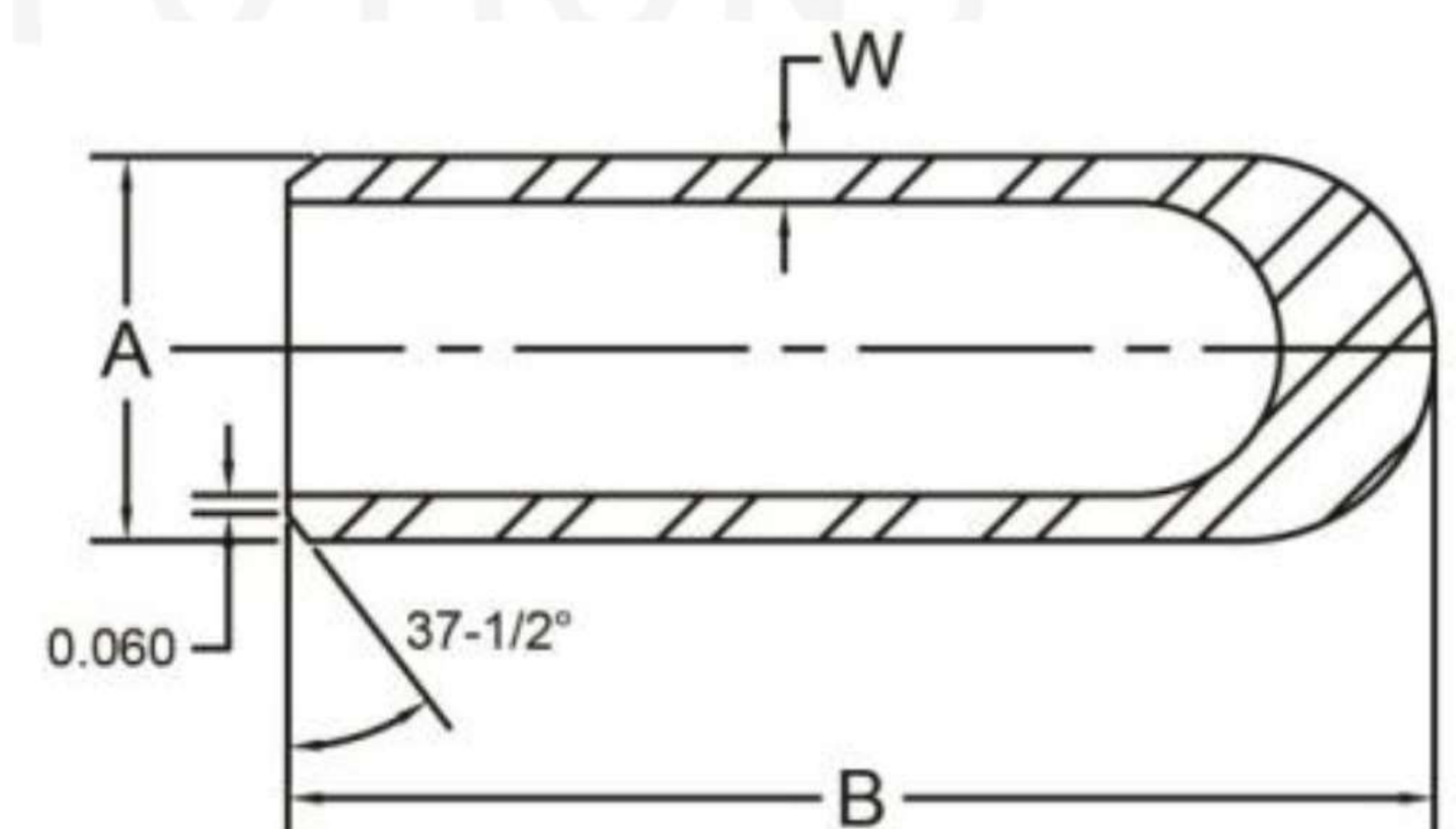
Electro-Zinc Plated



Hollow, Welding Bevel

ASTM A234, MSS SP-95, ASME B16.25

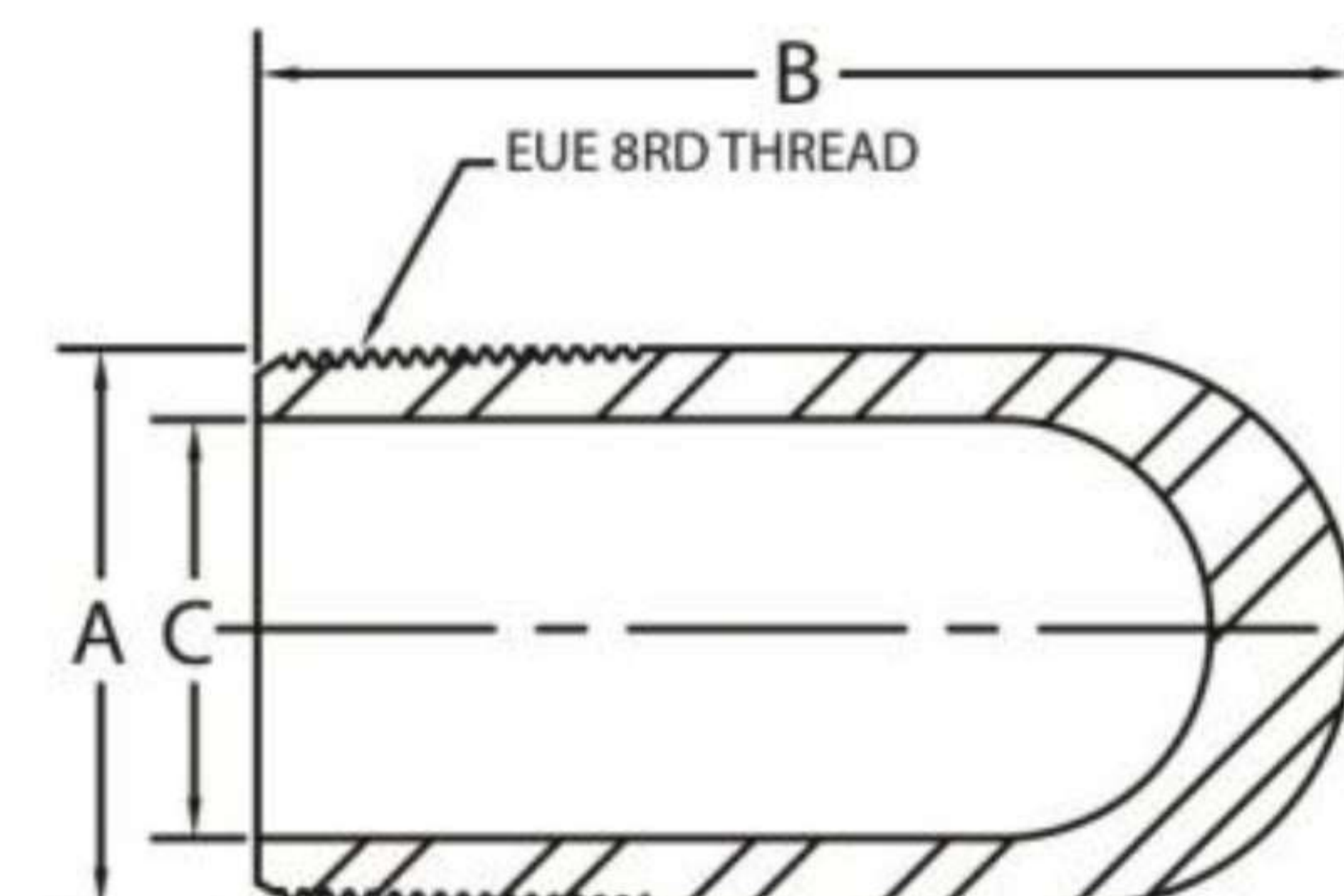
Pipe Size	A	B	C				Wt. Ea.			
			STD	XH	160	XXH	STD	XH	160	XXH
1	1.312	3.000	1.031	0.937	0.781	0.578	-	0.67	1.38	1.00
1-1/4	1.688	3.250	1.343	1.250	1.140	0.875	-	1.00	2.25	1.50
1-1/2	2.000	3.500	1.593	1.484	1.312	1.062	-	1.17	2.00	2.00
2	2.375	4.000	2.000	1.937	1.671	1.484	2.25	2.74	3.50	3.50



Hollow, Welding Bevel

ASTM A234, MSS SP-95, ASME B16.25

Pipe Size	A	D	W				Wt. Ea.			
			STD	XH	160	XXH	STD	XH	160	XXH
2-1/2	2.875	5.000	0.203	0.276	0.375	0.552	3.00	3.50	-	8.00
3	3.500	6.000	0.216	0.300	0.438	0.600	4.50	6.00	-	11.00
4	4.500	7.000	0.237	0.337	0.531	0.674	7.50	10.00	-	18.00



Hollow, API 8 Round Threads

API 5B, API J55 or N80, API EUE 8RD

Pipe Size	A	B	C			Wt. Ea.		
			STD	XH	XXH	STD	XH	XXH
2	2.594	5.000	1.995	1.875	1.500	3.50	4.00	9.00
2-1/2	3.093	5.500	2.441	2.312	1.750	4.25	6.00	14.00
3	3.750	6.500	2.992	2.875	2.250	10.00	15.00	25.00
3-1/2	4.250	7.000	3.476	3.375	2.750	-	-	-

Electro-Zinc Plated