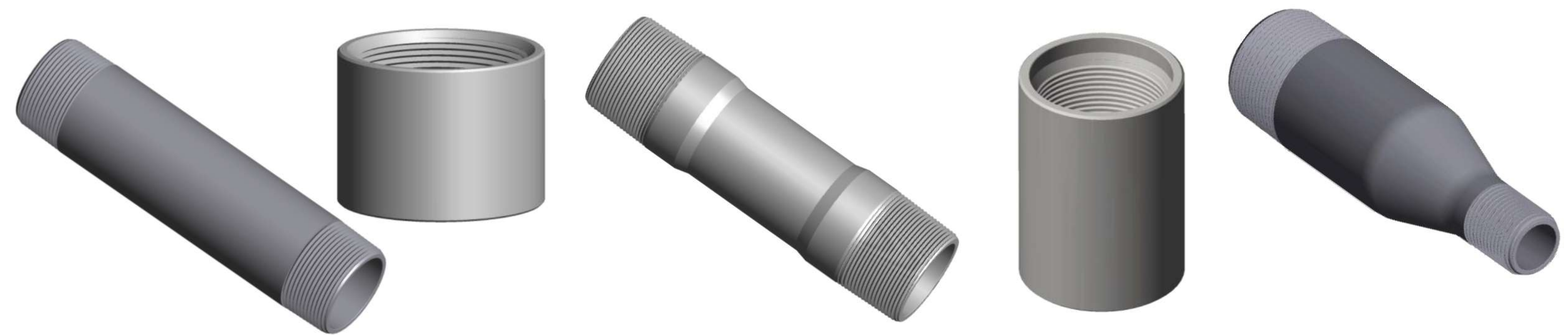




CREATIVE PIPING SOLUTIONS

Innovating The Piping Industry | www.creativepiping.com

Pipe Nipples, Swage Nipples, and Merchant Couplings Dimension Specifications



Creative Piping Solutions (CPS) is Manufacturer of Pipe Nipples, Swage Nipples, and Merchant Couplings
We are a leading manufacturer specializing in high-quality pipe nipples, swage nipples, and merchant couplings, delivering superior performance across various industries worldwide. Our products are precision-engineered, built to meet international standards, and designed for exceptional durability and reliability.

PRODUCT CATALOG

PIPE NIPPLES

Pipe Nipples Welded and Seamless, Carbon Steel and Stainless-Steel	3
Pipe Nipples End Finishes	4

API PRODUCTS

API Casing Nipples	5
API Tubing Nipples EUE (With and Without Center Turned)	5
API Tubing Nipples NUE	5
API Tubing Nipples Combination EUE x NUE	6
API Tubing Nipples Combination EUE x LP	6
API Casing Swage Nipples	7
API Tubing Swage Nipples	8

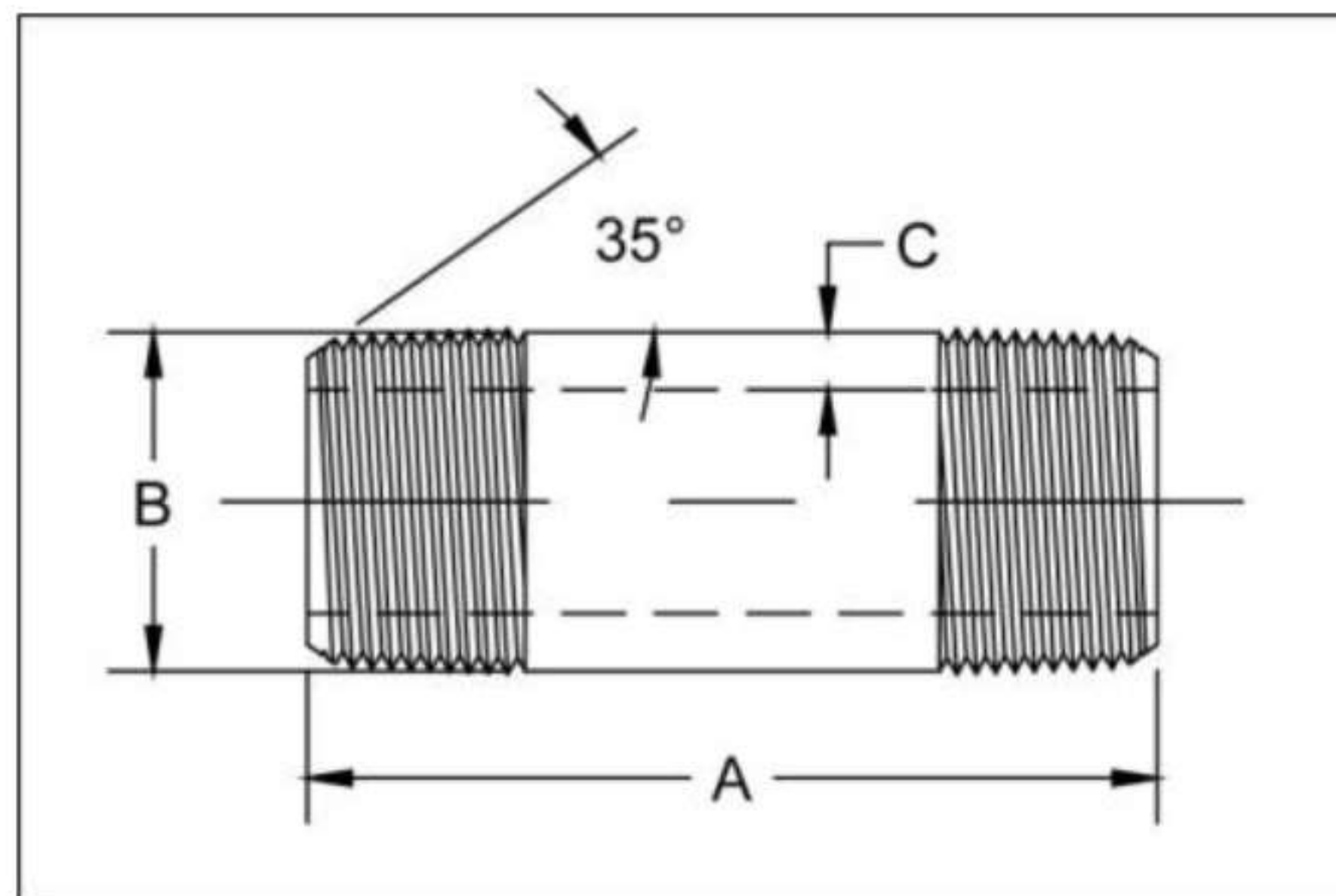
COUPLINGS

Couplings Standard Merchant Full	9
Couplings Standard Merchant R&L	9
Couplings Standard Merchant Half	9
Couplings API Line Pipe	10
Couplings Extra Heavy No Recess	10
Couplings Waterwell Ream & Drifted	11
Couplings Extra Heavy Recess Half	11
Couplings Extra Heavy No Recess Half	11

SWAGE NIPPLES

Swage Nipples Threaded Both Ends	12
Swage Nipples Beveled Both Ends	13
Swage Nipples Plain Both Ends	14
Swage Nipples Eccentric TBE, BBE, PBE	15





Pipe Nipples, Welded and Seamless, Carbon Steel and Stainless Steel

PIPE SIZE	PIPE OD B	LENGTH A		NOMINAL WALL C			
		CLOSE	SPACE	STD	XH	160	XXH
1/8	0.405	3/4	1-1/2 - 24	0.068	0.095	N/A	N/A
1/4	0.540	7/8	1-1/2 - 24	0.088	0.119	N/A	N/A
3/8	0.675	1	1-1/2 - 24	0.091	0.126	N/A	N/A
1/2	0.840	1-1/8	1-1/2 - 24	0.109	0.147	0.188	0.294
3/4	1.050	1-3/8	1-1/2 - 24	0.113	0.154	0.219	0.308
1	1.315	1-1/2	2 - 24	0.133	0.179	0.250	0.358
1-1/4	1.660	1-5/8	2 - 24	0.140	0.191	0.250	0.382
1-1/2	1.900	1-3/4	2 - 24	0.145	0.200	0.281	0.400
2	2.375	2	2-1/2 - 24	0.154	0.218	0.344	0.436
2-1/2	2.875	2-1/2	3 - 24	0.203	0.276	0.375	0.552
3	3.500	2-5/8	3 - 24	0.216	0.300	0.438	0.600
3-1/2	4.000	2-3/4	4 - 24	0.226	0.318	N/A	N/A
4	4.500	2-7/8	4 - 24	0.237	0.337	0.531	0.674
5	5.563	3	4-1/2 - 24	0.258	0.375	0.625	0.750
6	6.625	3-1/8	4-1/2 - 24	0.280	0.432	0.719	0.864
8	8.625	3-1/2	5 - 24	0.322	0.500	0.906	0.875

Continious Welded - ASTM A53 Type F

Electric Resistance Welded - ASTM A53 Type E, Grade B

Seamless, High Temperature - ASTM A106 Grade B, ASTM A53 Type S, Grade B, API 5L, Grade B

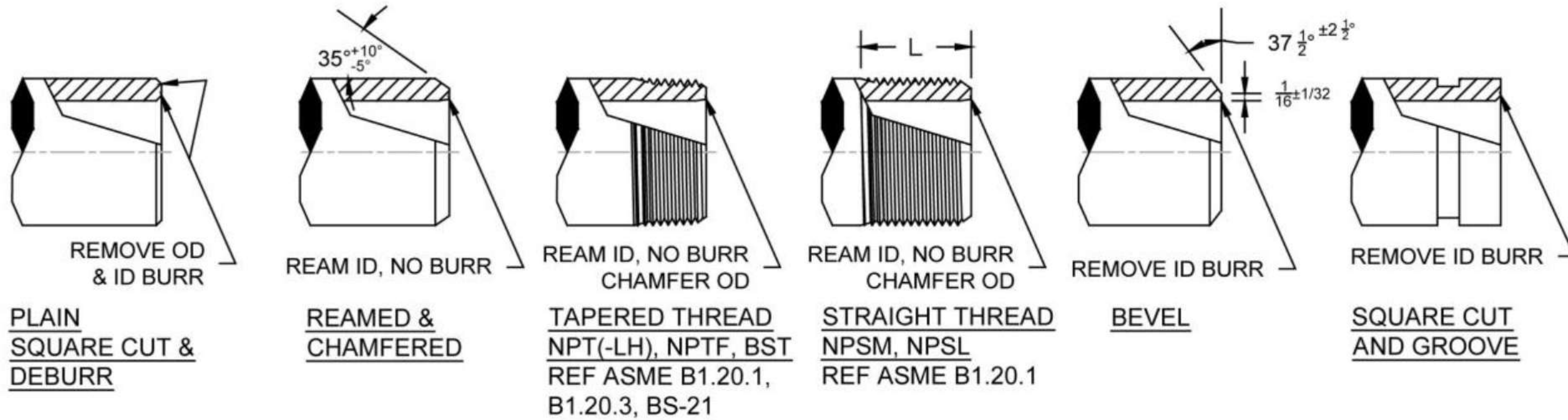
Seamless, Low Temperature - ASTM A333 Grade 6

Electric Resistance Welded - ASTM A312, Type 304/304L or 316/316L

Seamless, ASTM A312 Type 304/304L or 316/316L

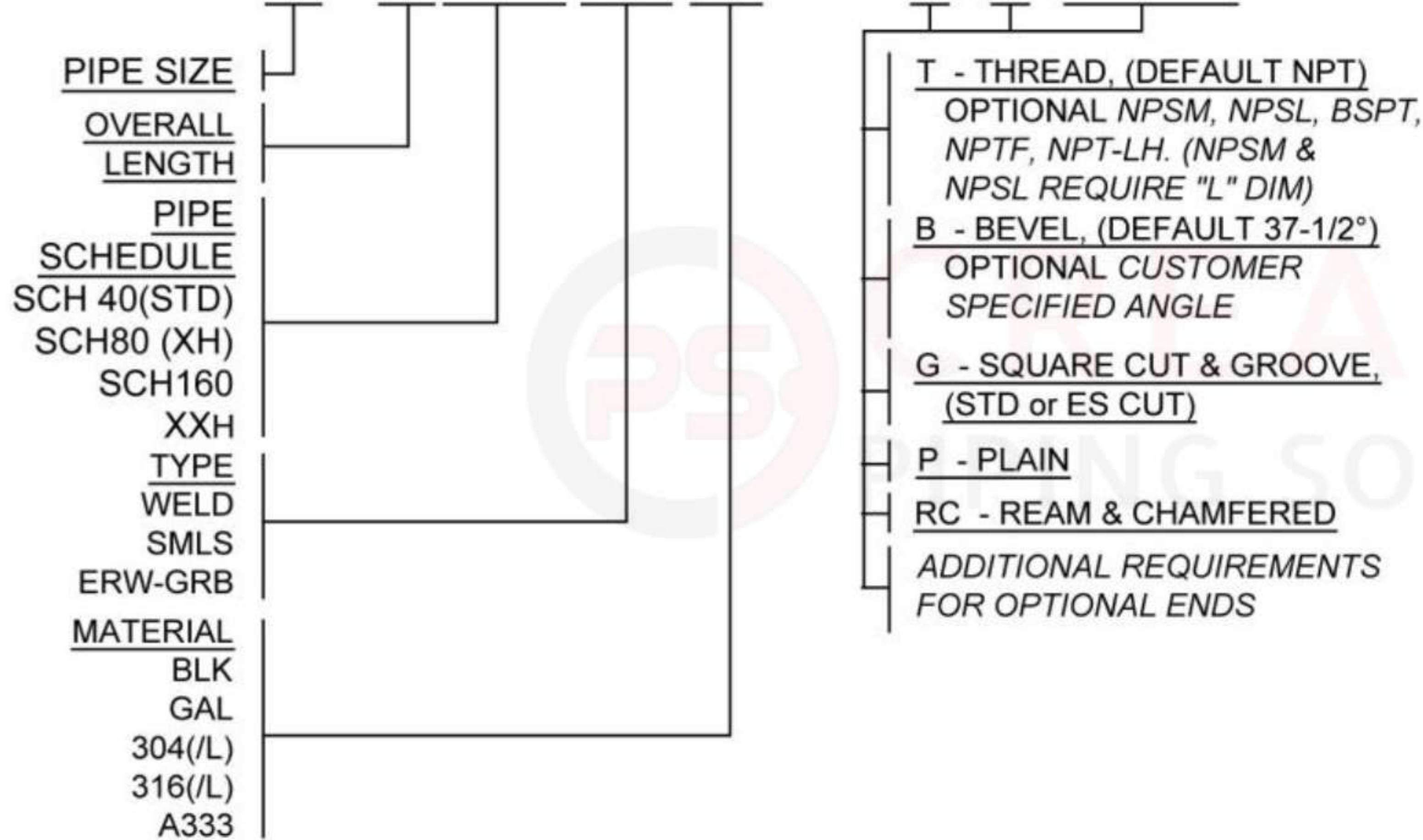
Threads conform to ASME B.1.20.1

Pipe Nipple End Finishes



PIPE NIPPLE DESCRIPTION AND TERMINOLOGY

EXAMPLE: $\frac{3}{4}$ X 12 SCH40 SMLS 304 NIPPLE T X B NPSM x 2"



- NOTES:
- 1) END FINISH ABBREVIATION ORDER; T, B, G, P, RC.
 - 2) TBE, BBE, GBE, AND PBE MAY BE SUBSTITUTED FOR NIPPLES WITH SAME END FINISHES ON BOTH ENDS.
 - 3) DEFAULT END FINISHES LISTED FOR THREAD, BEVEL, AND PLAIN. OPTIONAL VARIATIONS TO BE CALLED OUT IN TEXT INCLUDING ADDITIONAL REQUIREMENTS.
 - 4) STD CUT GROOVE IS STANDARD. ES CUT GROOVE END FINISH AVAILABLE UPON REQUEST
 - 5) NIPPLES CLOSE TOUGH 12" LONG SHALL HAVE A LENGTH TOLERANCE OF $\pm \frac{1}{16}$ ". NIPPLES OVER 12" LONG SHALL HAVE A TOLERANCE OF $\pm \frac{1}{8}$ ".

TBE - "THREAD BOTH ENDS" (BOTH ENDS THREADED WITH STANDARD NPT THREADS)

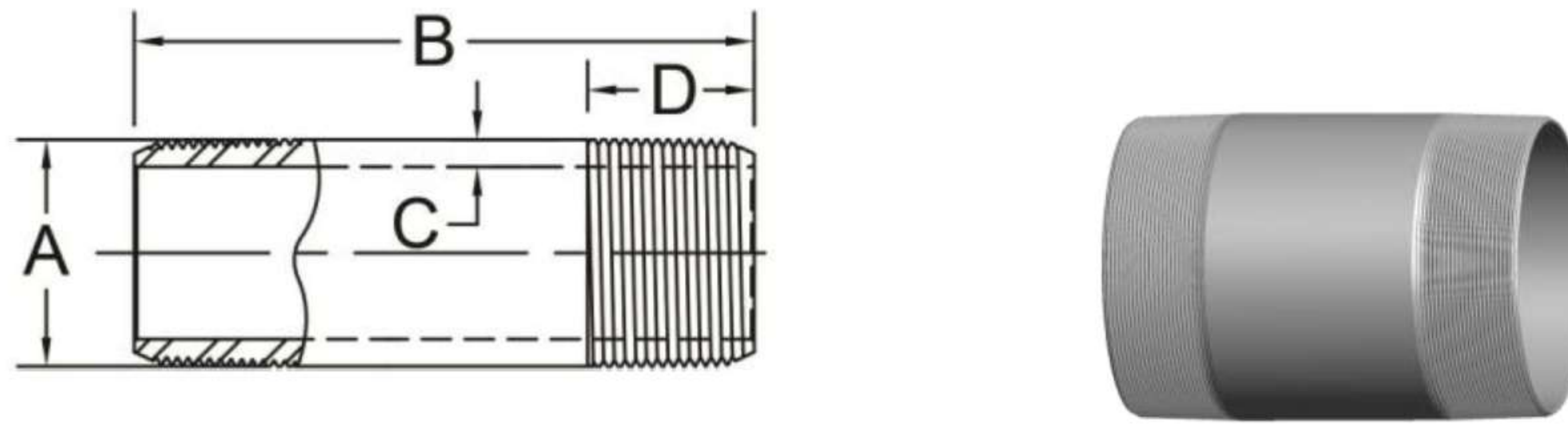
TOE - "THREAD ONE END" (ONE END THREADED WITH STANDARD NPT THREAD. CUSTOMER MUST SPECIFY OTHER END, OTHERWISE SQUARE CUT & DEBURR WILL BE SHIPPED)

NPTF - "DRYSEAL" (STANDARD TAPER DRYSEAL PIPE THREADS)

NPSL - "STRAIGHT LOCKNUT" (STANDARD STRAIGHT PIPE THREADS FOR LOOSE-FITTING MECHANICAL WITH LOCKNUTS)

NPSM - "STRAIGHT MECHANICAL" (STANDARD STRAIGHT PIPE THREADS FOR FREE-FITTING MECHANICAL JOINTS FOR FIXTURES)

BST (BS21, ISO 7/1) - BRITISH STANDARD TAPER PIPE THREADS



API Casing Nipples, 8RD - API 5B STC

K55, N80, L80 and P110 Materials

Casing Size	4-1/2	4-1/2	5-1/2	5-1/2	7	8-5/8	9-5/8
Lbs per Foot	10.5	11.6	14.0	15.5	20.0	24.0	36.0
A	4.500	4.500	5.500	5.500	7.000	8.625	9.625
B	Per Customer Requirements						
C	0.224	0.250	0.244	0.275	0.272	0.264	0.352
D	2.625	2.625	2.875	2.875	3.125	3.000	3.375

API 8RD Threads Identified with Red Stripe

Electro-Zinc Plated



API Tubing Nipples, EUE -With and Without Center Turned

J55, N80 STD, XH and XXH Schedules

NPS Size	3/4	1	1-1/4	1-1/2	2	2-1/2	3	3-1/2	4
API 5CT Size	1.050	1.315	1.660	1.900	2-3/8	2-7/8	3-1/2	4	4-1/2
Threads/Inch	10 RD	10 RD	10 RD	10 RD	8 RD	8 RD	8 RD	8 RD	8 RD
A	1.315	1.469	1.812	2.094	2.594	3.094	3.750	4.250	4.750
B	Per Customer Requirements								
C for Std	0.246	0.210	0.216	0.242	0.299	0.326	0.379	0.387	0.396
C for XH	0.287	0.256	0.266	0.296	0.360	0.390	0.437	0.438	0.467
C for XXH	0.441	0.435	0.458	0.497	0.547	0.672	0.750	0.75	0.812
D	1.050	1.315	1.660	1.900	2.375	2.875	3.500	4.000	4.500
E	2.250	2.375	2.500	2.563	3.063	3.250	3.500	3.625	3.750
Approx. Weight	Available Upon Request								

API 8RD Threads Identified with Red Stripe

API 10RD Threads Identified with Yellow Stripe

Electro-Zinc Plated



API Tubing Nipples, NUE

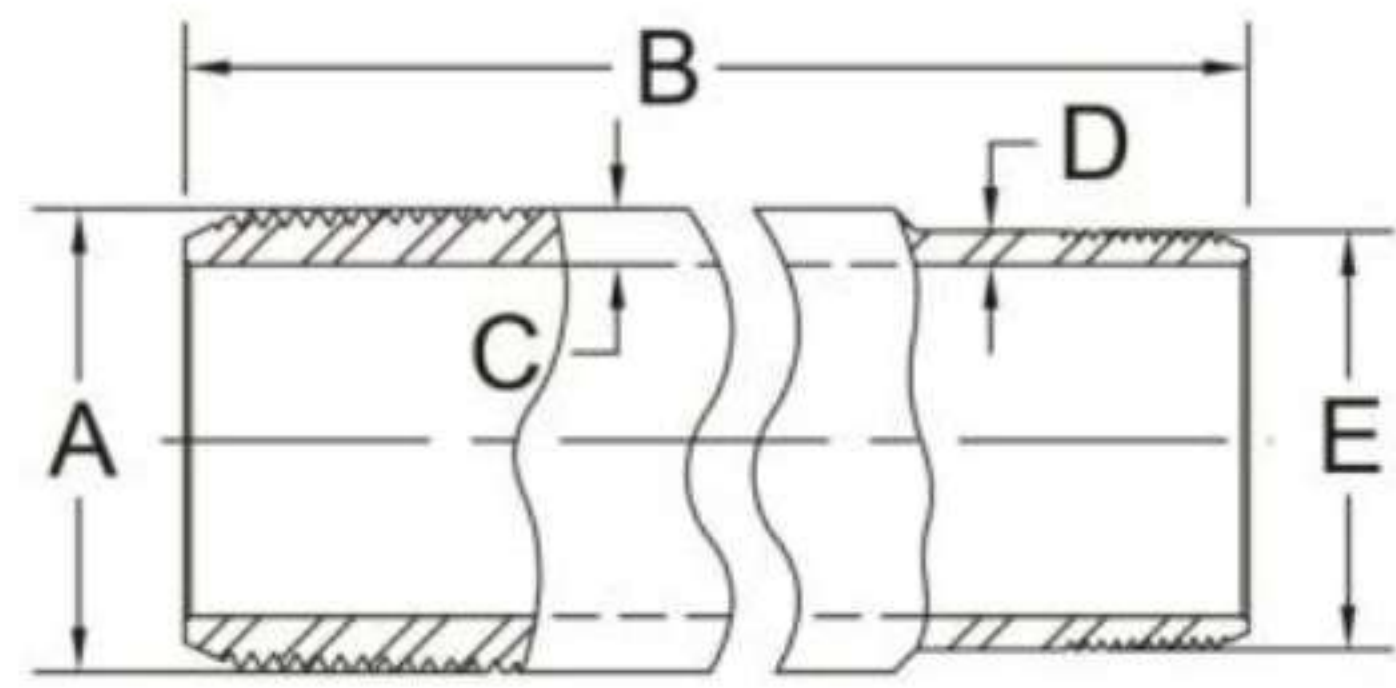
J55, N80 STD and XH Schedules

NPS Size	3/4	1	1-1/4	1-1/2	2	2-1/2	3	3-1/2	4
API 5CT Size	1.050	1.315	1.660	1.900	2-3/8	2-7/8	3-1/2	4	4-1/2
Threads/Inch	10 RD	10 RD	10 RD	10 RD	10 RD	10 RD	10 RD	8 RD	8 RD
A	1.050	1.315	1.660	1.900	2.375	2.875	3.500	4.000	4.500
B	Per Customer Requirements								
C for Std	0.113	0.133	0.140	0.145	0.190	0.217	0.254	0.262	0.271
C for XH	0.154	0.179	0.191	0.200	0.250	0.281	0.312	0.312	0.343
Approx. Weight	Available Upon Request								

API 8RD Threads Identified with Red Stripe

API 10RD Threads Identified with Yellow Stripe

Electro-Zinc Plated



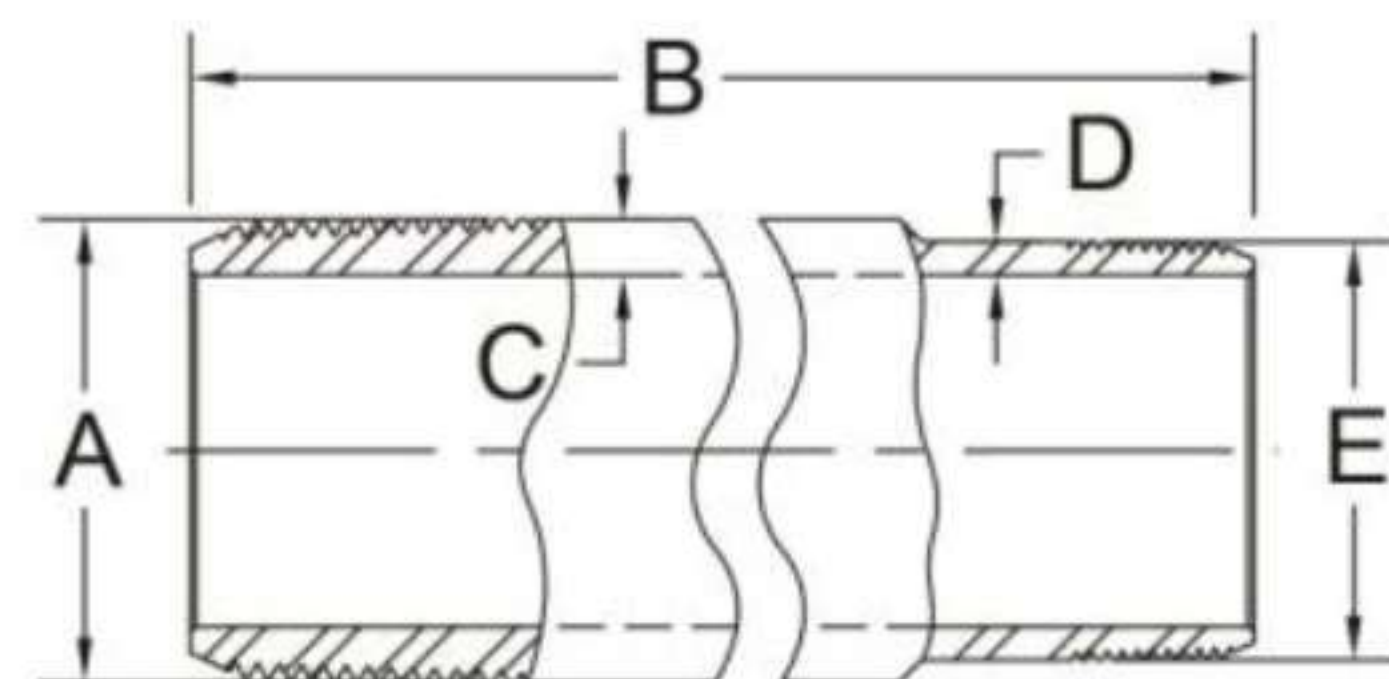
API Tubing Nipples, Combination EUE x NUE J55, N80 STD and XH Schedules

EUE x NUE Size	2x2	2-1/2x2-1/2	3x3	3-1/2x3-1/2	4x4
EUE Threads/Inch	8 RD	8 RD	8 RD	8 RD	8 RD
NUE Threads/Inch	10RD	10RD	10RD	10RD	8RD
A	2.594	3.094	3.750	4.250	4.750
B	Per Customer Requirements				
C for Std	0.299	0.326	0.379	0.387	0.396
C for XH	0.360	0.390	0.437	0.438	0.467
D for Std	0.190	0.217	0.254	0.226	0.271
D for XH	0.250	0.281	0.312	0.312	0.343
E	2.375	2.875	3.500	4.000	4.500
Approx. Wt. #	Available Upon Request				

API 8RD Threads Identified with Red Stripe

API 10RD Threads Identified with Yellow Stripe

Electro-Zinc Plated

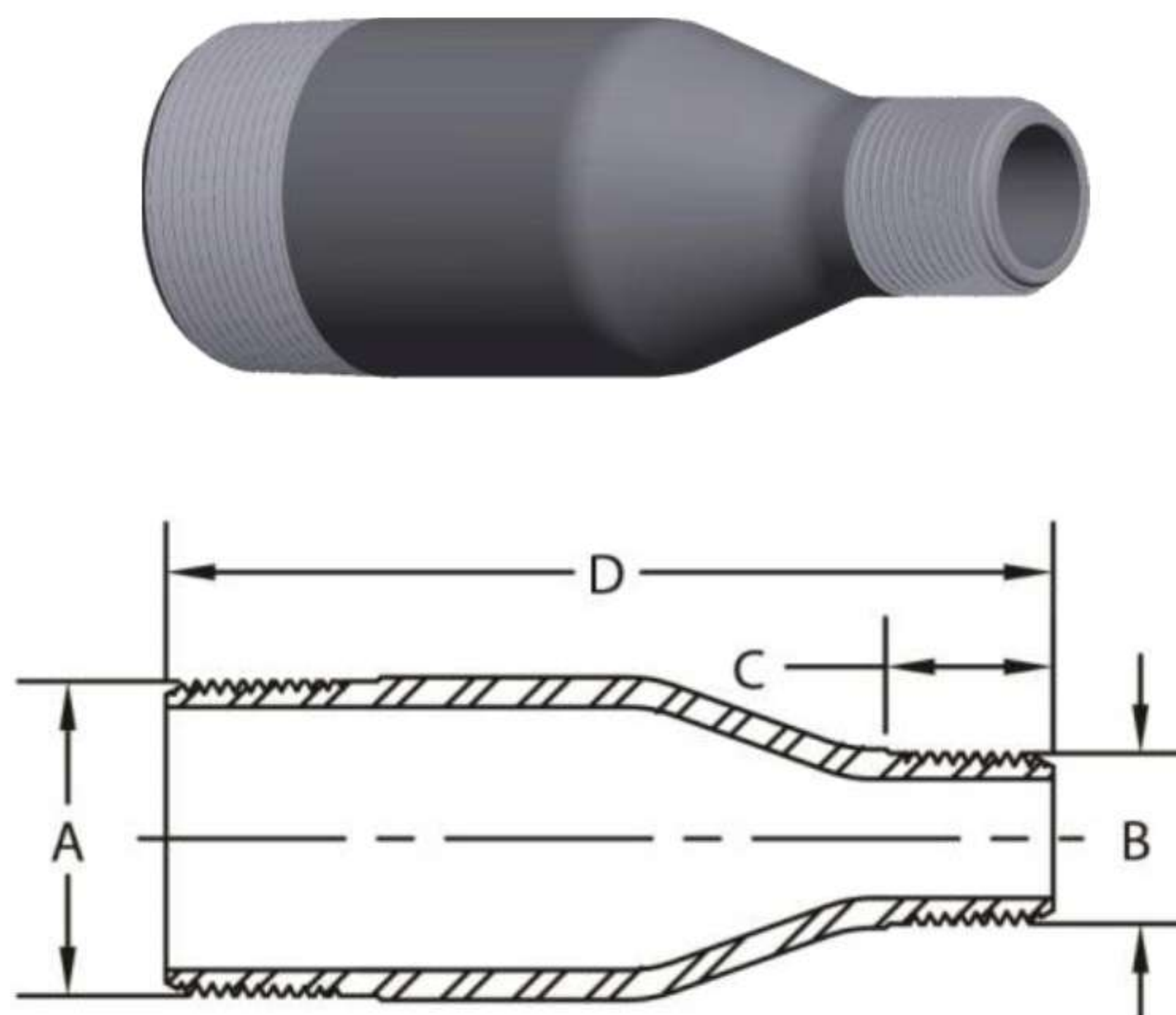


API Tubing Nipples, Combination EUE x LP J55, N80 STD and XH Schedules

EUE x LP Size	2x2	2-1/2x2-1/2	3x3	3-1/2x3-1/2	4x4
EUE Threads/Inch	8 RD	8 RD	8 RD	8 RD	8 RD
LP Threads/Inch	11.5	8.0	8.0	8.0	8.0
A	2.594	3.094	3.750	4.250	4.750
B	Per Customer Requirements				
C for Std	0.299	0.326	0.379	0.387	0.396
C for XH	0.360	0.390	0.437	0.438	0.467
D for Std	0.176	0.232	0.247	0.258	0.271
D for XH	0.251	0.281	0.312	0.313	0.342
E	2.375	2.875	3.500	4.000	4.500
Wt. Ea.	Available Upon Request				

Electro-Zinc Plated

API 8RD Threads are Identified with Red Stripe



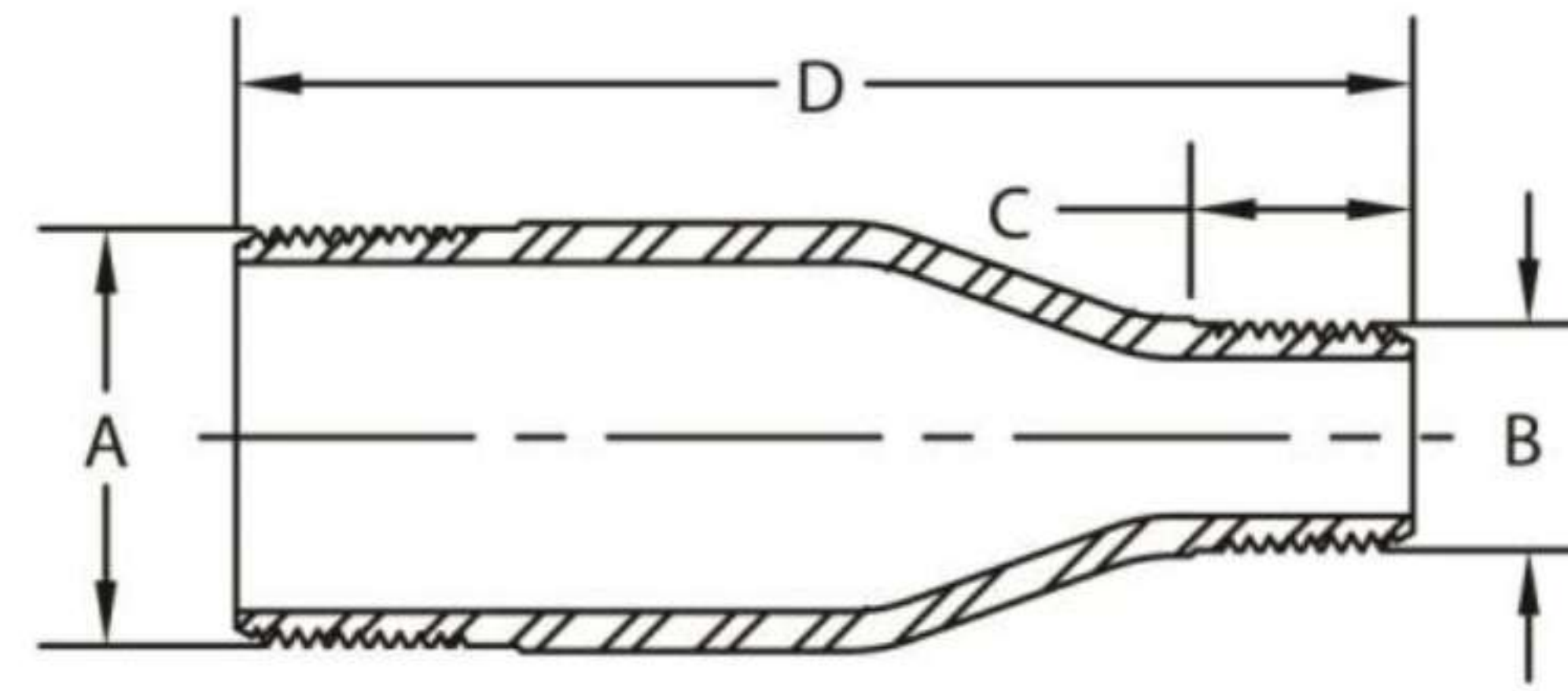
Pipe Size	A	B	C	D	Wt Ea.
4-1/2 OD 8RD 11.6 lb/ft x 2 NUE 10RD XH	4.500	2.375	2.125	9.00	12.00
4-1/2 OD 8RD 10.5 lb/ft X 2-1/2 EUE 8RD STD		3.094	2.625	11.00	8.00
4-1/2 OD 8RD 11.6 lb/ft X 2-1/2 EUE 8RD XH		3.500	2.750	9.00	12.00
4-1/2 OD 8RD 11.6 lb/ft X 3 NUE 10RD XH		3.500	2.750	9.00	7.50
5-1/2 OD 8RD 14.0 lb/ft X 2 LP 11.5V STD	5.500	2.375	1.625	11.00	12.50
5-1/2 OD 8RD 20.0 lb/ft X 2 LP 11.5V XH		3.094	2.625		17.00
5-1/2 OD 8RD 14.0 lb/ft X 2-1/2 EUE 8RD STD		3.500	2.000		12.50
5-1/2 OD 8RD 14.0 lb/ft X 3 LP 8V STD		3.500	2.000		12.50
7 OD 8RD 23.0 lb/ft X 2 LP 11.5V STD	7.000	2.375	1.562	12.00	16.10
7 OD 8RD 38.0 lb/ft X 2 LP 11.5V XH		4.500	3.000		25.00
7 OD 8RD 23.0 lb/ft X 4-1/2 OD 8RD STD		4.500	3.000		17.00
8-5/8 OD 8RD 32.0 lb/ft X 2 LP 11.5V STD	8.625	2.375	1.562	13.00	-
8-5/8 OD 8RD 32.0 lb/ft X 4-1/2 OD 8RD STD		4.500	3.125		-
8-5/8 OD 8RD 24.0 lb/ft X 7 OD 8RD STD		7.000	3.625		-



API Tubing Swage Nipples

API 5B, API 5CT, API 5L, J55, K55, L80, N80 and P110

Creative Piping Solutions



Pipe Size	A	B	C	D	Approx. Wt.		
					Std	XH	XXH
1-1/2" NUE 10RD X 1" LP 11.5V	1.900	1.315	0.985	4.50	-	2.50	-
2" NUE 10RD X 1-1/2" NUE 10RD	2.375	1.900	1.375	6.50	2.00	3.00	-
2" LP 11.5V X 1-1/2" NUE 10RD					2.00	2.33	-
2" EUE 8RD X 1" LP 11.5V	2.594	1.315	0.985	8.00	2.50	4.00	-
2" EUE 8RD X 1-1/4" EUE 10RD		1.812	1.375		2.50	-	-
2" EUE 8RD X 1-1/2" EUE 10RD		2.094	1.438		2.50	4.00	-
2" EUE 8RD x 2" NUE 10RD		2.375	1.625	6.00	3.50	-	-
2" EUE 8RD X 2" NUE 10RD				8.00	4.00	-	-
2" EUE 8RD X 2" NUE 10RD				12.00	7.00	-	-
2-1/2" NUE 10RD X 2" LP 11.5V	2.875	2.375	1.058	8.00	3.00	6.00	-
2-1/2" LP 8V X 2" EUE 8RD		2.594	1.938	7.00	4.00	6.00	-
2-1/2" EUE 8RD X 2" LP 11.5V	3.094	2.375	1.058	8.00	5.00	6.00	-
2-1/2" EUE 8RD X 2" NUE 10RD			1.625		5.00	-	-
2-1/2" EUE 8RD X 2" EUE 8RD		2.594	1.938		5.00	6.00	10.00
2-1/2" EUE 8RD X 2" EUE 8RD		2.875	2.063	12.00	7.50	-	-
2-1/2" EUE 8RD X 2-1/2" NUE 10RD				6.00	3.50	-	-
3" NUE 10RD X 2" LP 11.5V	3.500	2.375	1.058	8.00	4.50	6.00	-
3" LP 8V X 2" EUE 8RD		2.594	1.938		6.00	7.50	-
3" NUE 10RD X 2-1/2" EUE 8RD		3.094	2.125		6.00	9.00	-
3" LP 8V X 2-1/2" EUE 8RD				12.00	10.80	13.85	-
3" LP 8V X 2-1/2" EUE 8RD							
3" EUE 8RD X 2" LP 11.5V	3.750	2.375	1.058	8.00	7.50	7.50	-
3" EUE 8RD X 2" EUE 8RD		2.594	1.938		7.50	9.00	-
3" EUE 8RD X 2-1/2" LP 8V		2.875	1.571		7.50	9.50	-
3" EUE 8RD X 2-1/2" EUE 8RD		3.094	2.125		7.50	9.00	-
3" EUE 8RD X 2-1/2" EUE 8RD				12.00	10.00	12.40	-
4" LP 8V X 2-1/2" EUE 8RD	4.500	3.094	2.125	9.00	-	-	-
4" NPT 8V X 3" EUE 8RD		3.750	2.375	12.00	14.67	-	-
4" NUE 8RD X 2" LP 11.5V		2.375	1.058	9.00	7.50	7.50	18.00
4" NUE 8RD X 2-1/2" EUE 8RD					3.094	2.125	-
4" NUE 8RD X 3" LP 8V		3.500	1.634		7.50	10.00	-
4" EUE 8RD X 2" LP 11.5V	4.750	2.375	1.058	9.00	8.00	14.67	-
4" EUE 8RD X 2" LP 11.5V				3.094	2.125	11.00	-
4" EUE 8RD X 2-1/2" EUE 8RD		12.00	14.67			-	-
4" EUE 8RD X 3" EUE 8RD			14.67			-	-
4" EUE 8RD X 3" EUE 8RD		3.750	2.375	9.00	8.00	-	-

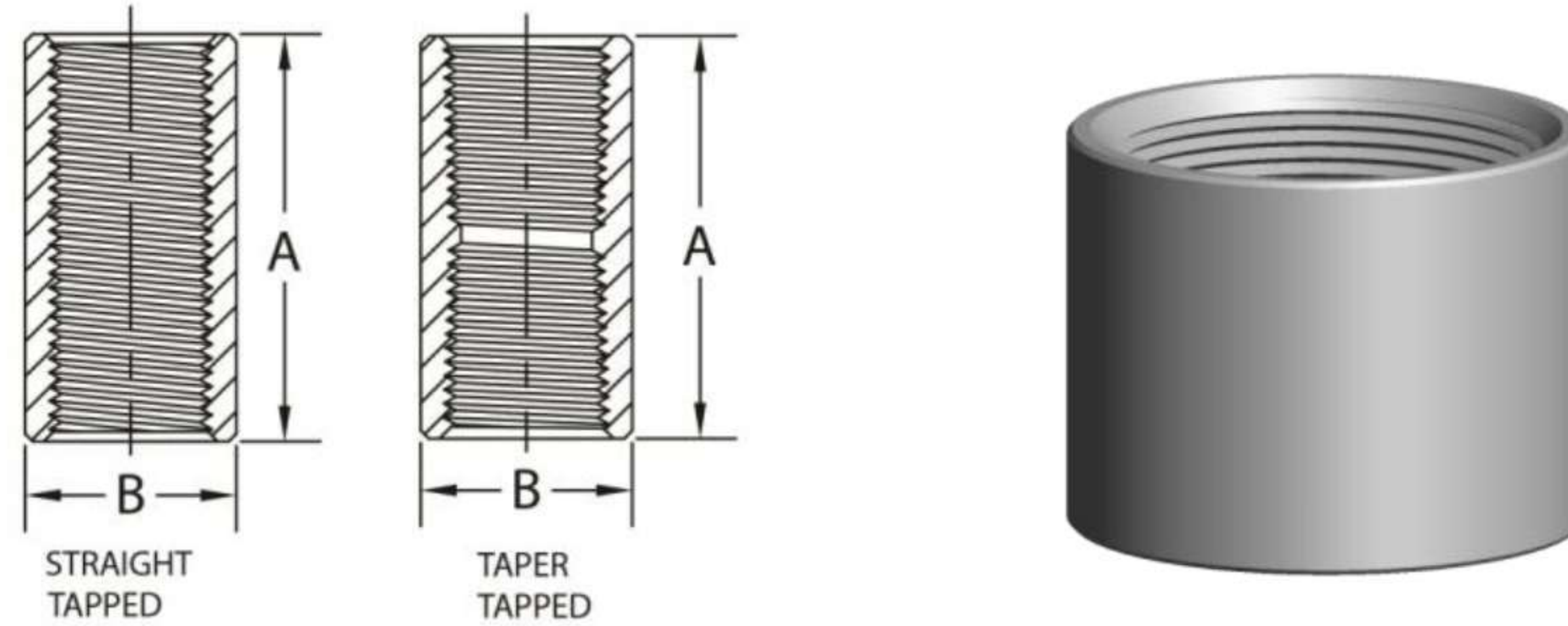
Available STD, XH, and XXH upon request

Note: NUE and EUE tubing size descriptions are the former NPS ID pipe size nomenclature still used in the swage nipple and bull plug industry. For current NUE and EUE OD tubing size description labels see API 5CT.

Couplings—Standard Merchant

ASTM A53 Type F 1/8" - 3", ASTM A106 Grade B 3-1/2" - 6"

Creative Piping Solutions



Couplings, Standard Merchant

ASTM A865, ASME B1.20.1

Pipe Size	1/8	1/4	3/8	1/2	3/4	1	1-1/4	1-1/2	2	2-1/2	3	3-1/2	4	5	6
A	0.812	1.188	1.188	1.562	1.625	2.000	2.062	2.062	2.125	3.125	3.250	3.375	3.500	3.750	4.000
B	0.562	0.719	0.875	1.062	1.312	1.576	1.900	2.200	2.750	3.250	4.000	4.625	5.000	6.296	7.390
Wt. Ea.	0.05	0.07	0.09	0.17	0.26	0.40	0.48	0.67	1.05	2.09	3.35	4.82	4.61	8.52	11.27

Unless otherwise specified, Standard Merchant Couplings are furnished straight tapped in sizes in sizes 1/8" to 2" inclusive.

Standard Merchant Couplings in 2" size are available Taper Tapped as special.

Standard Merchant Couplings in sizes 2-1/2" to 6" are furnished Taper Tapped.

Galvanized couplings are Electro Zinc Plated.

Black couplings are phosphate coated.

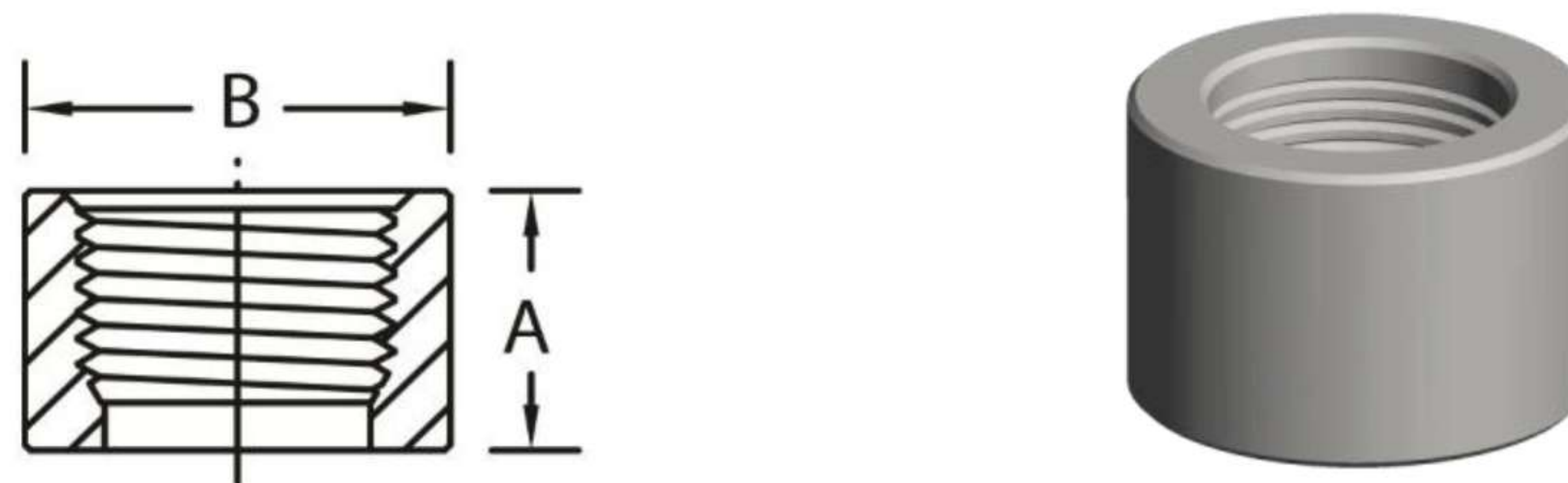


Standard Merchant, R&L

ASTM A865, ASME B1.20.1

Pipe Size	1/8	1/4	3/8	1/2	3/4	1	1-1/4	1-1/2	2	2-1/2	3	3-1/2	4
A	0.812	1.188	1.188	1.562	1.625	2.000	2.062	2.062	2.125	3.125	3.250	3.375	3.500
B	0.562	0.719	0.875	1.062	1.312	1.576	1.900	2.200	2.750	3.250	4.000	4.625	5.000
Wt. Ea.	0.05	0.07	0.09	0.17	0.26	0.40	0.48	0.67	1.05	2.09	3.35	4.82	4.61

All R&L Couplings are Taper Tapped



Half Couplings, Standard Merchant

ASTM A865, ASME B1.20.1

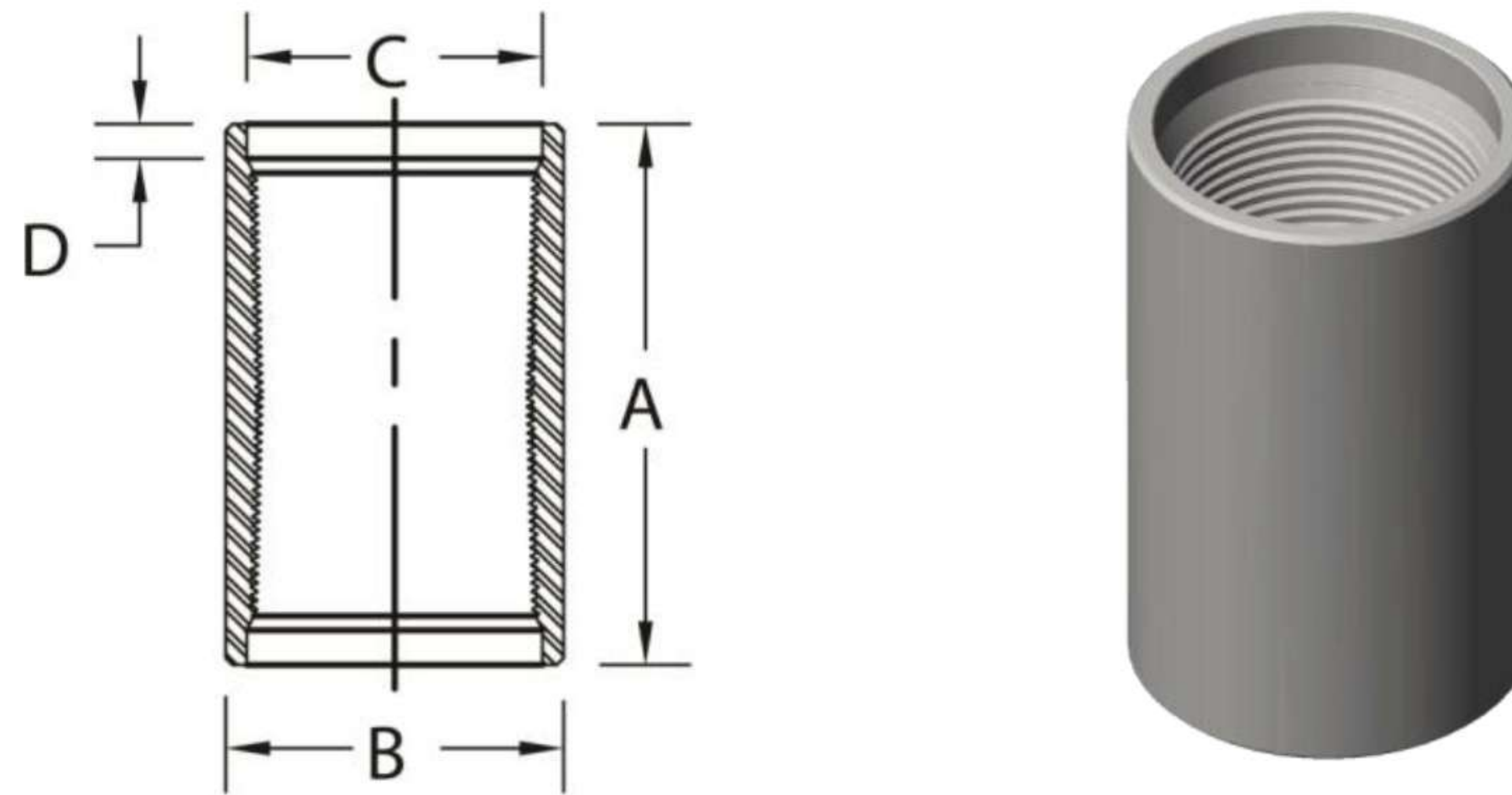
Pipe Size	1/8	1/4	3/8	1/2	3/4	1	1-1/4	1-1/2	2	2-1/2	3	3-1/2	4	5	6
A	0.344	0.531	0.531	0.719	0.750	0.937	0.969	0.969	1.000	1.500	1.562	1.625	1.688	1.750	1.875
B	0.562	0.719	0.875	1.062	1.312	1.576	1.900	2.200	2.750	3.250	4.000	4.625	5.000	6.296	7.390
Wt. Ea.	0.02	0.04	0.05	0.08	0.12	0.18	0.23	0.32	0.47	0.96	1.60	2.22	2.11	3.80	5.28

Unless otherwise specified, Standard Merchant Half Couplings are furnished Taper Tapped in sizes 1/8" to 1" inclusive,

Straight Tapped in sizes 1-1/4" to 2" inclusive and Taper Tapped in sizes 2-1/2" to 6" inclusive.

Galvanized couplings are Electro Zinc Plated.

Black couplings are phosphate coated.

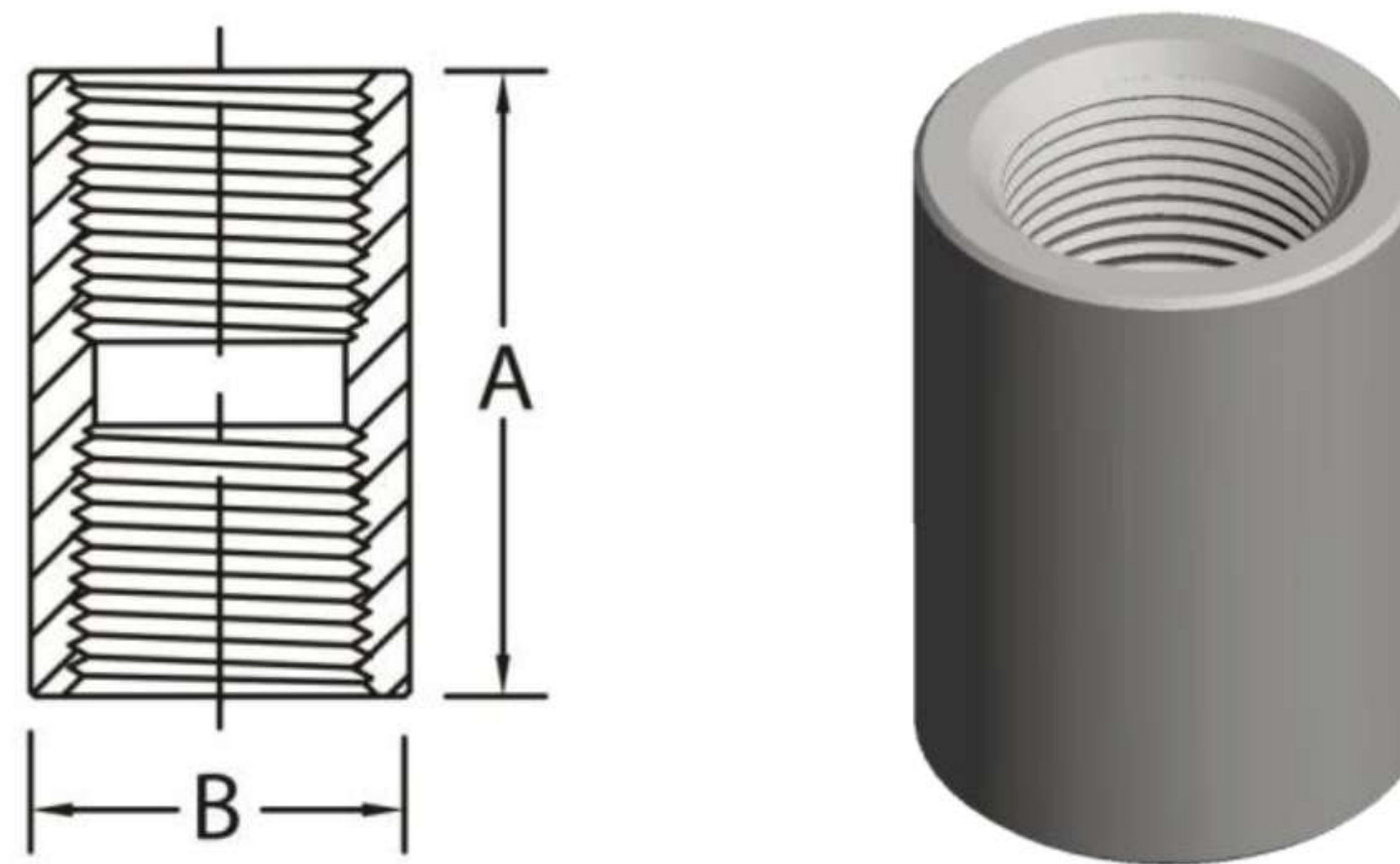


API Line Pipe Couplings

API 5L, API 5B

Pipe Size	1/8	1/4	3/8	1/2	3/4	1	1-1/4	1-1/2	2
A	1.062	1.625	1.625	2.125	2.125	2.625	2.750	2.750	2.875
B	0.562	0.718	0.875	1.062	1.312	1.576	2.054	2.200	2.875
C	0.468	0.603	0.738	0.903	1.113	1.378	1.723	1.963	2.469
D	0.052	0.120	0.115	0.158	0.152	0.224	0.228	0.244	0.238
Wt. Ea.	0.04	0.09	0.13	0.24	0.34	0.54	1.03	1.30	1.86

Pipe Size	2-1/2	3	3-1/2	4	5	6	8	10	12
A	4.125	4.250	4.375	4.500	4.625	4.875	5.250	5.750	6.125
B	3.375	4.000	4.625	5.200	6.296	7.390	9.625	11.750	14.000
C	2.969	3.594	4.094	4.594	5.657	6.719	8.719	10.844	12.844
D	0.492	0.471	0.466	0.492	0.505	0.586	0.677	0.739	0.787
Wt. Ea.	3.27	4.09	5.92	7.59	9.98	12.92	23.18	31.55	49.27

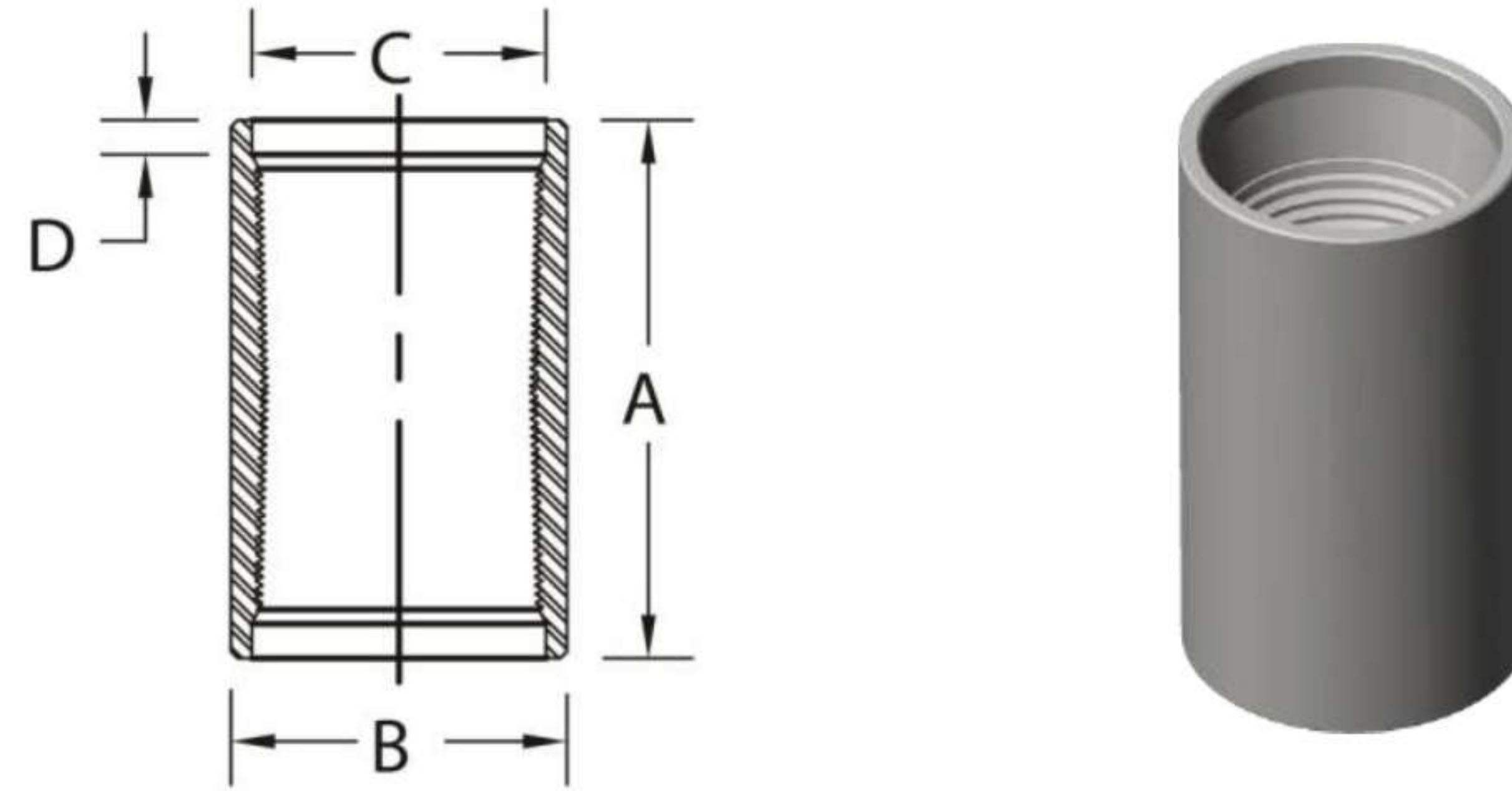


Couplings, XH No Recess, Threaded

ASTM A106, AAR 404, ASME B1.20.1

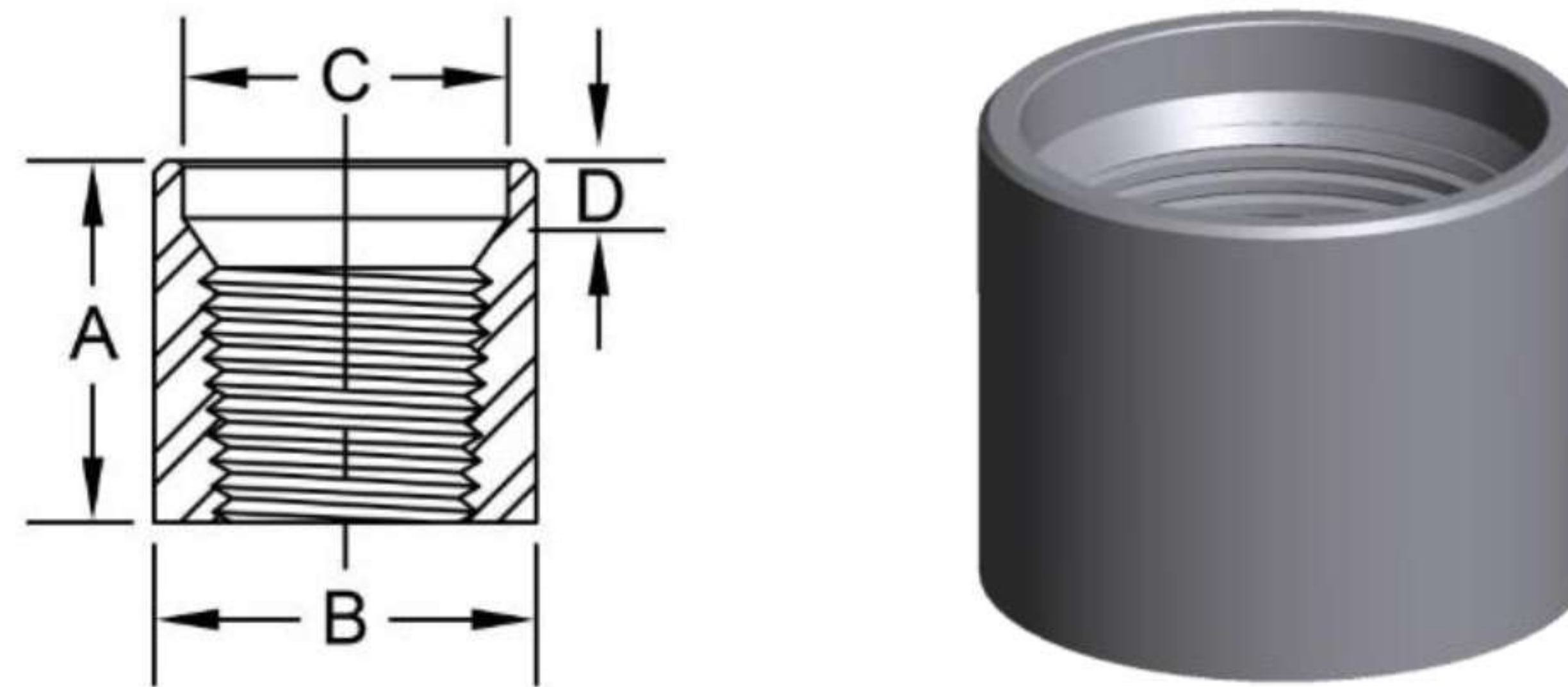
Pipe Size	1/8 *	1/4	3/8	1/2	3/4	1	1-1/4	1-1/2	2	2-1/2	3	3-1/2 *	4 *	5 *	6 *
A	1.062	1.625	1.625	2.125	2.125	2.625	2.750	2.750	2.875	4.125	4.250	4.375	4.500	4.625	4.875
B	0.562	0.719	0.875	1.062	1.312	1.576	2.054	2.200	2.875	3.375	4.000	4.625	5.200	6.296	7.390
Wt. Ea.	0.04	0.09	0.14	0.25	0.36	0.68	1.08	0.95	2.01	3.53	4.61	6.25	8	10.51	13.74

Sizes marked " *" not covered under AAR 404



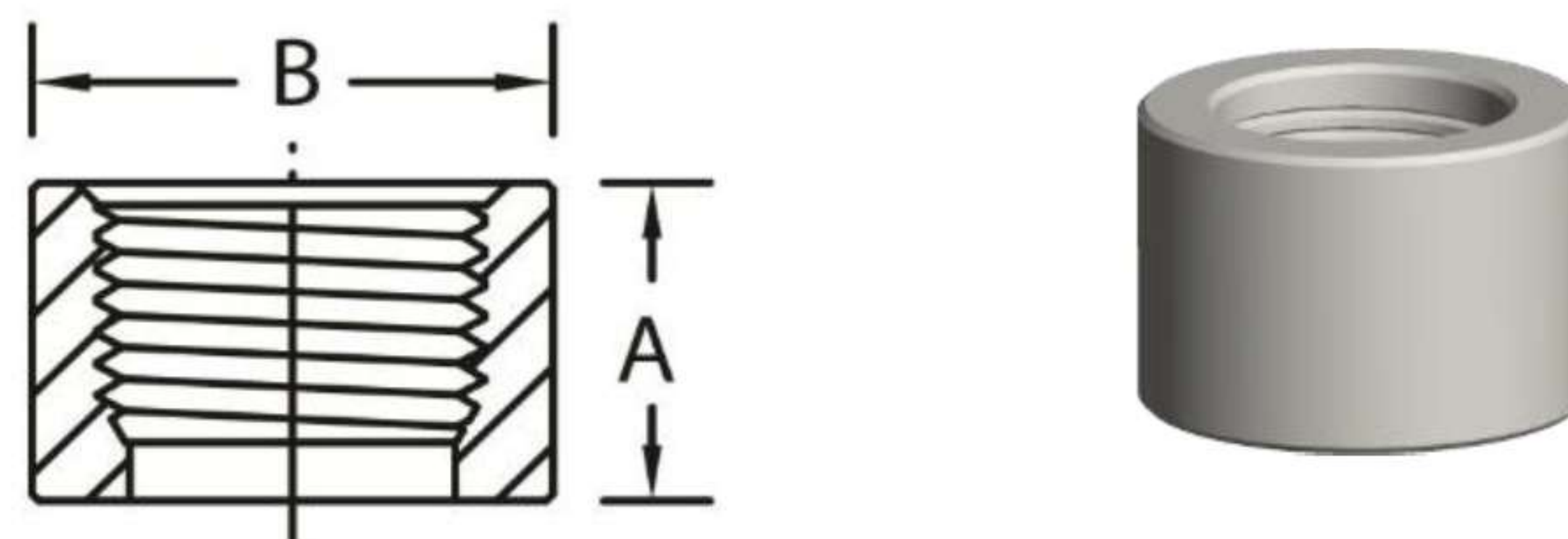
Couplings, Waterwell Ream & Drifted, Threaded ASTM A106, ASTM 865, ASME B1.20.1

Pipe Size	1-1/4	1-1/2	2	2-1/2	3	3-1/2	4
A	2.750	2.750	3.375	3.937	4.062	4.187	4.312
B	1.718	1.969	2.468	2.969	3.594	4.094	4.594
C	0.188	0.188	0.188	0.188	0.188	0.188	0.188
D	1.900	2.200	2.750	3.250	4.000	4.625	5.200
Wt. Ea.	0.60	0.84	1.58	2.32	3.80	5.53	7.14



Half Couplings, XH, Recess, Taper Thread ASTM A106, ASME B1.20.1

Pipe Size	3/4	2	2-1/2	3	4	8	10	12
A	1.000	1.375	2.000	2.062	2.188	2.500	2.750	2.937
B	1.313	2.875	3.375	4.000	5.200	9.625	11.750	14.000
C	1.113	2.469	2.969	3.594	4.594	8.719	10.844	12.844
D	0.152	0.238	0.492	0.471	0.492	0.677	0.739	0.787
Wt. Ea.	0.17	0.92	1.72	2.12	3.84	11.50	14.50	17.00



Half Couplings, XH, No Recess, Taper Thread ASTM A106, ASME B1.20.1

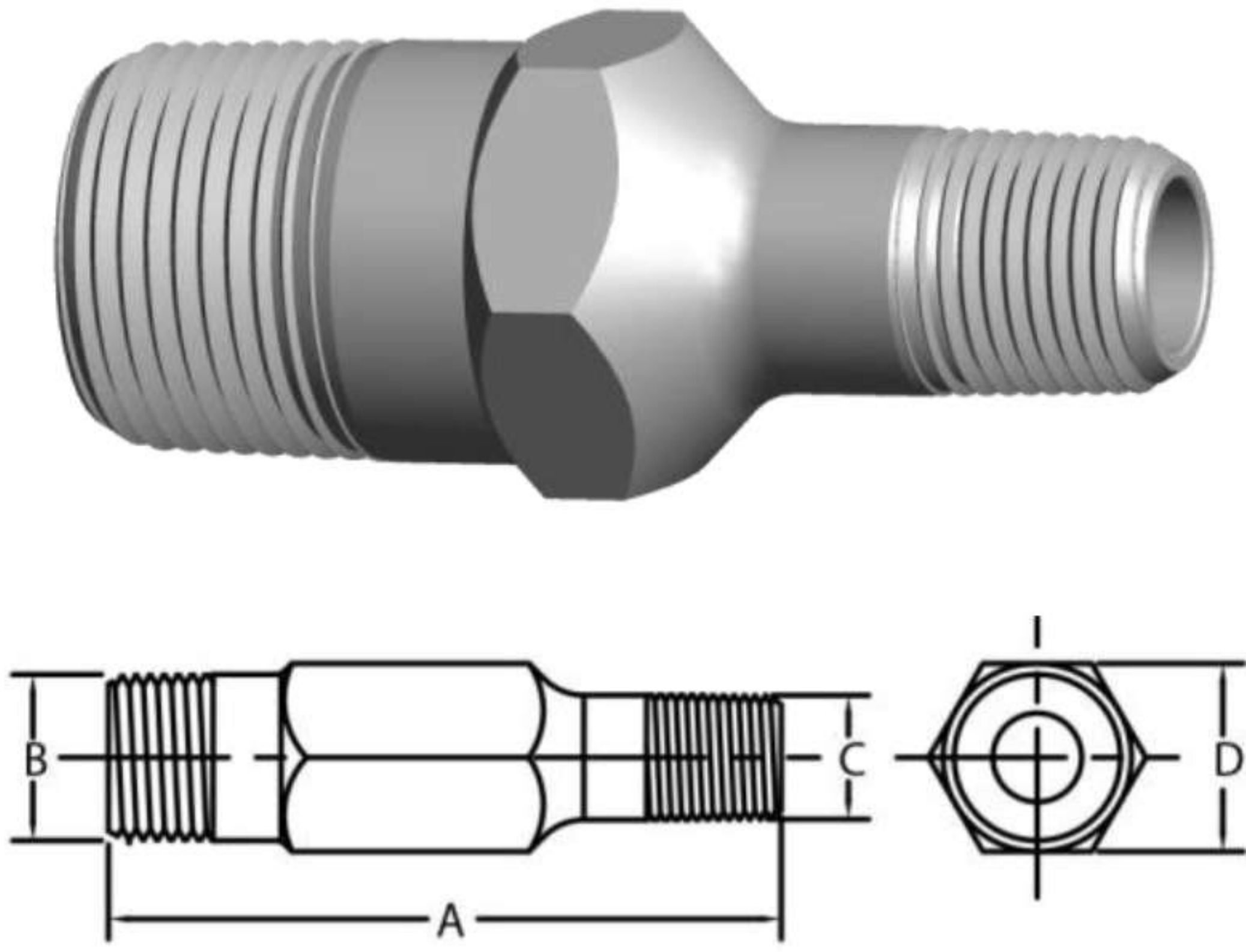
Pipe Size	1/8	1/4	3/8	1/2	3/4	1	1-1/4
A	0.469	0.750	0.750	1.000	1.000	1.250	1.312
B	0.563	0.719	0.875	1.063	1.313	1.576	2.054
Wt. Ea.	0.02	0.04	0.06	0.11	0.17	0.35	0.51

Pipe Size	1-1/2	2	2-1/2	3	4	5	6
A	1.312	1.375	2.000	2.062	2.188	2.188	2.312
B	2.200	2.875	3.375	4.000	5.200	6.296	7.390
Wt. Ea.	0.45	0.92	1.72	2.12	3.84	4.85	6.85

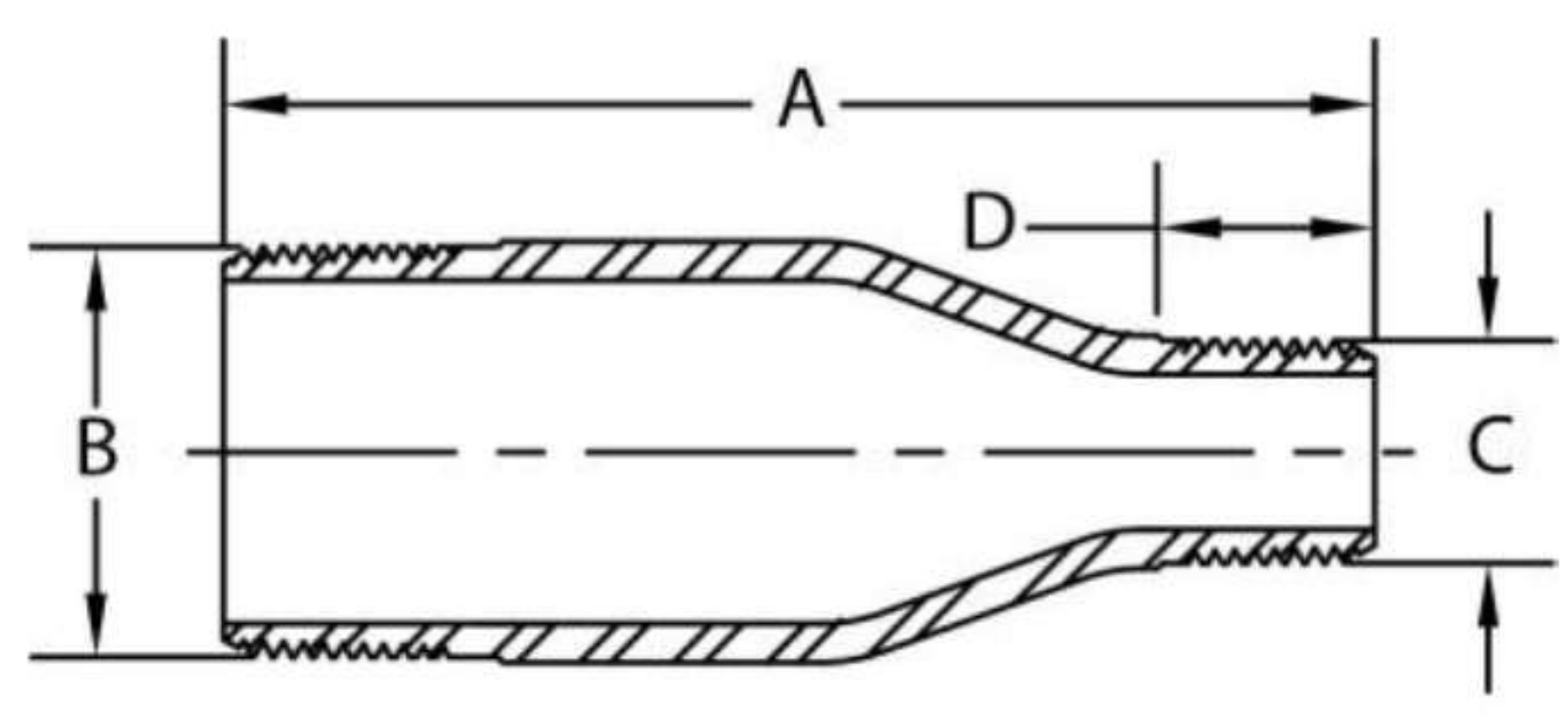
Swage Nipples - Threaded Both Ends

ASTM A234, MSS SP-95, ASME B1.20.1

Creative Piping Solutions



1" NPS and Smaller



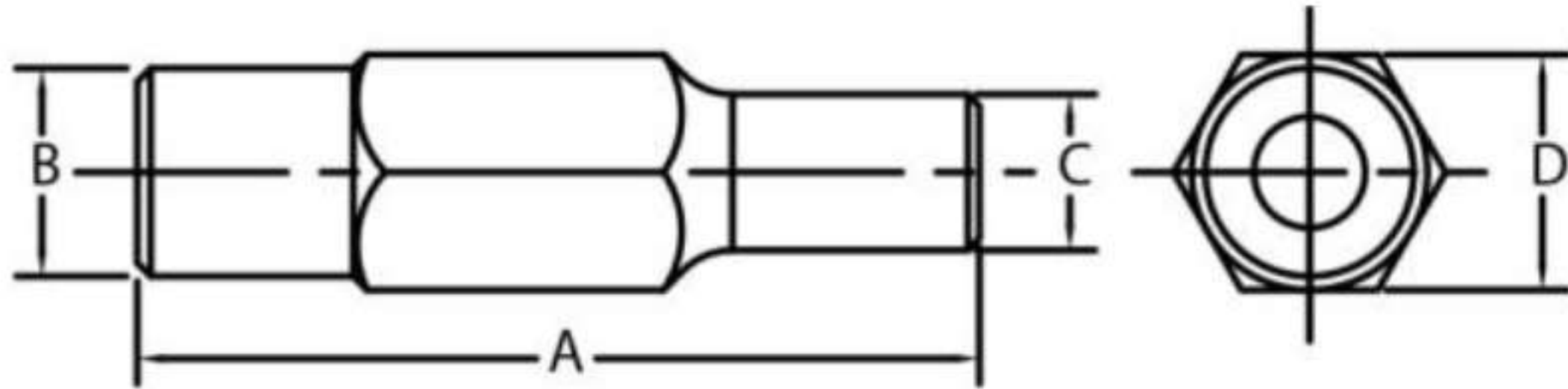
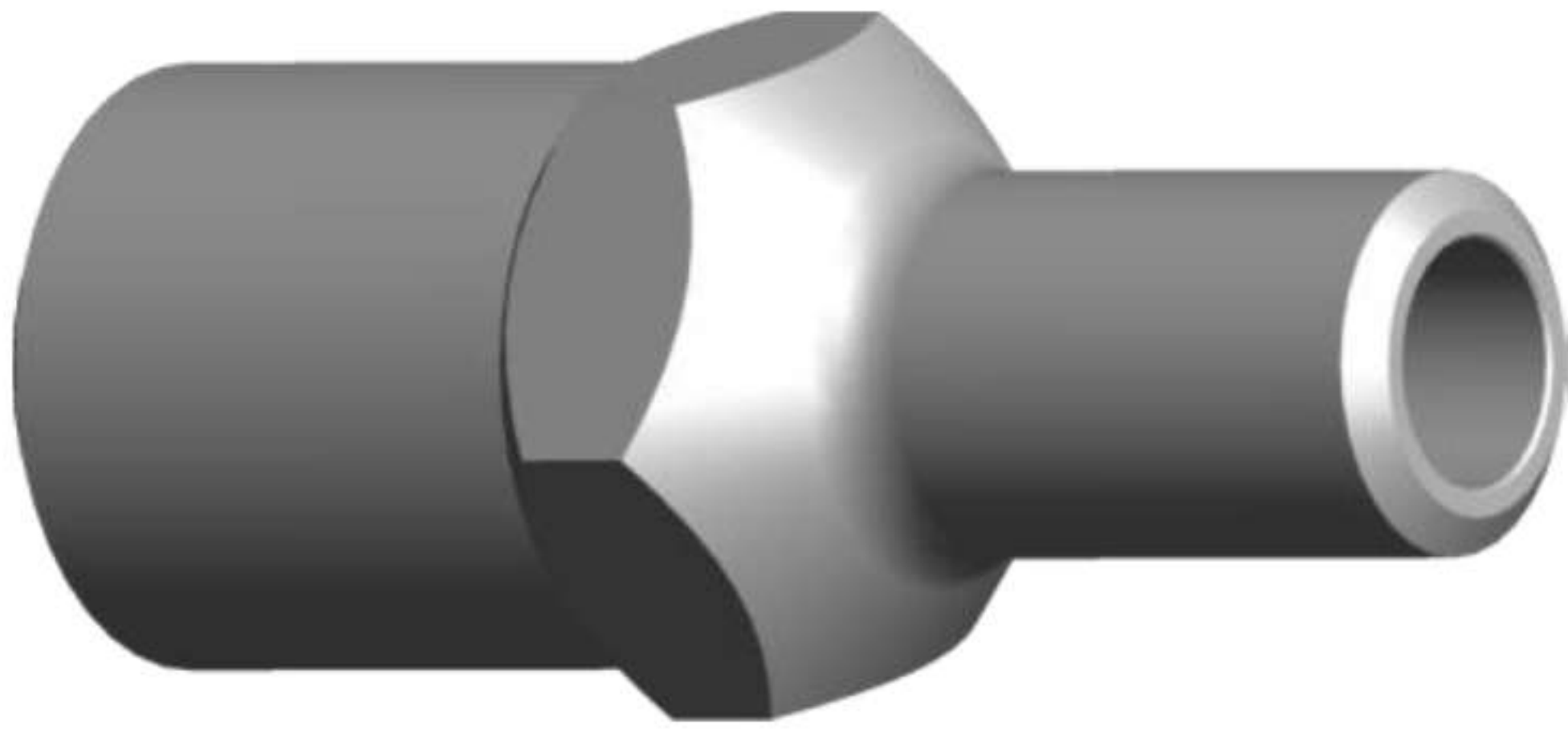
1-1/4" NPS and Larger

Pipe Size	A	B	C	D	Wt. Ea.			
					Std	XH	160	XXH
1/2 X 1/8	2.750	0.840	0.405	0.875	N/A	0.33	0.50	0.50
1/2 X 1/4			0.540					
1/2 X 3/8			0.675					
3/4 X 1/8	3.000	1.050	0.405	1.062	N/A	0.50	0.75	0.75
3/4 X 1/4			0.540					
3/4 X 3/8			0.675					
3/4 X 1/2			0.840					
1 X 1/8	3.500	1.315	0.405	1.375	N/A	0.67	1.00	1.00
1 X 1/4			0.540					
1 X 3/8			0.675					
1 X 1/2			0.840					
1 X 3/4			1.050					
1-1/4 x 1/2	4.000	1.660	0.840	1.250	N/A	1.00	1.50	1.50
1-1/4 x 3/4			1.050	1.250				
1-1/4 x 1			1.315	1.375				
1-1/2 x 1/2	4.500	1.900	0.840	1.250	N/A	1.17	2.00	2.00
1-1/2 x 3/4			1.050	1.250				
1-1/2 x 1			1.315	1.375				
1-1/2 x 1-1/4			1.660	1.375				
2 x 1/4	6.500	2.375	0.540	1.000	N/A	3.00	4.25	4.25
2 x 3/8			0.675	1.000				
2 x 1/2			0.840	1.250				
2 x 3/4			1.050	1.250				
2 x 1			1.315	1.375				
2 x 1-1/4	7.000	2.875	1.660	1.375	2.00	3.50	8.00	8.00
2 x 1-1/2			1.900	1.437				
2-1/2 x 3/4			1.050	1.250	N/A			
2-1/2 x 1			1.315	1.375				
2-1/2 x 1-1/4			1.660	1.375	3.00			
2-1/2 x 1-1/2			1.900	1.437				
2-1/2 x 2	2.375	1.500						
3 x 1/2	8.000	3.500	0.840	1.250	N/A	6.00	11.00	11.00
3 x 3/4			1.050	1.250				
3 x 1			1.315	1.375				
3 x 1-1/4			1.660	1.375	4.50			
3 x 1-1/2			1.900	1.437				
3 x 2			2.375	1.500				
3 x 2-1/2			2.875	1.937				
4 x 1/2	9.000	4.500	0.840	1.250	N/A	10.00	18.00	18.00
4 x 3/4			1.050	1.250				
4 x 1			1.315	1.375	7.50			
4 x 1-1/4			1.660	1.375				
4 x 1-1/2			1.900	1.437				
4 x 2			2.375	1.500				
4 x 2-1/2			2.875	1.937				
4 x 3			3.500	2.000				
5 x 2	11.000	5.563	2.375	1.500	11.50	17.00	N/A	N/A
5 x 3			3.500	2.000				
5 x 4			4.500	2.062				
6 x 1-1/2	12.000	6.625	1.900	1.437	17.00	25.00	N/A	N/A
6 x 2			2.375	1.500				
6 x 3			3.500	2.000				
6 x 4			4.500	2.062				
6 x 5			5.563	2.188				

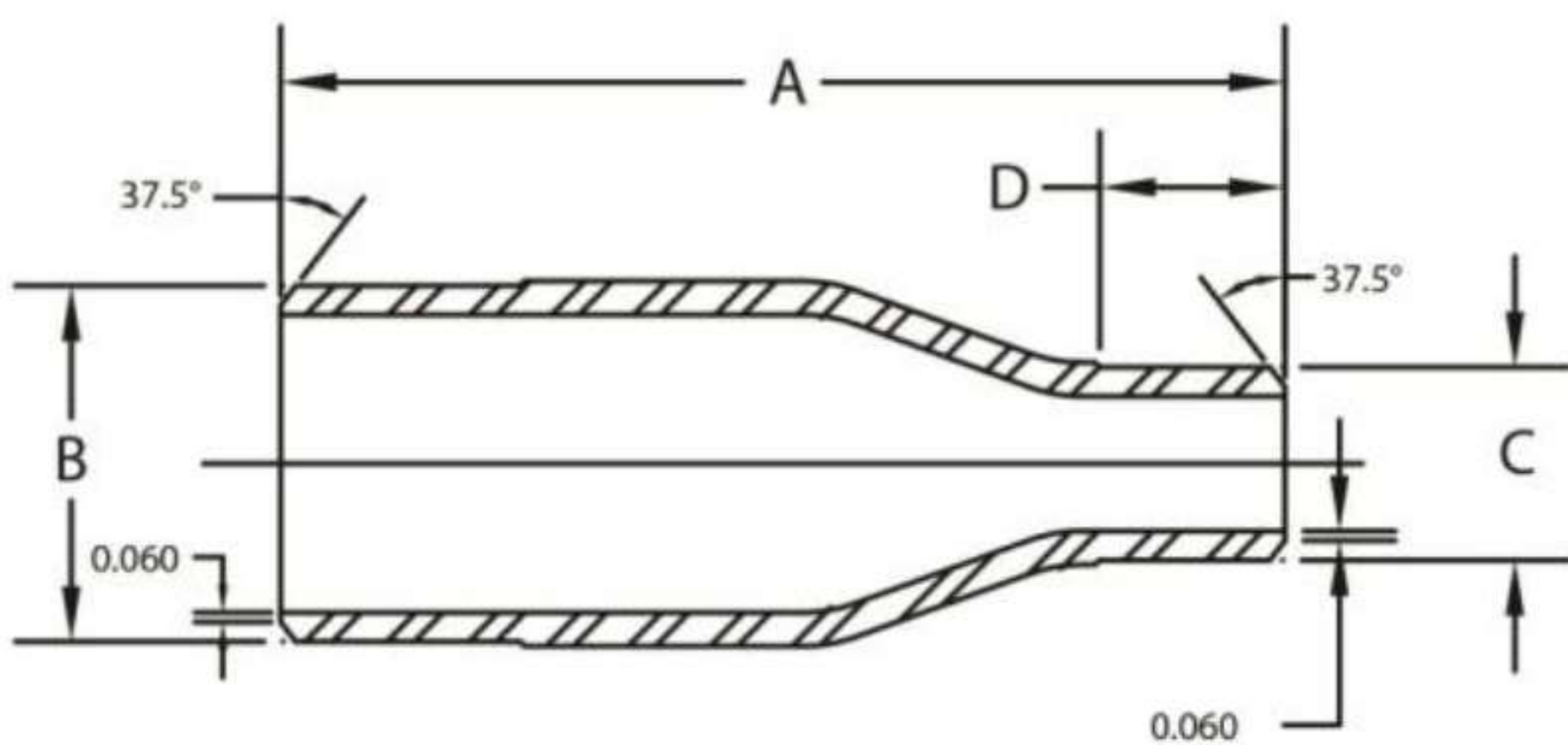
Swage Nipples - Beveled Both Ends

ASTM A234, MSS SP-95, ASME B16.9

Creative Piping Solutions



1" NPS and Smaller



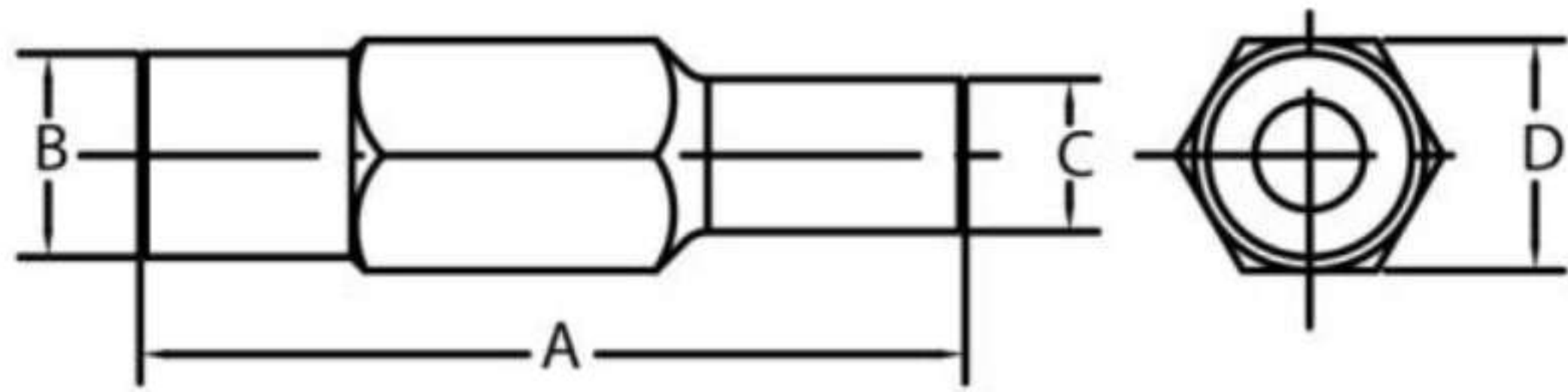
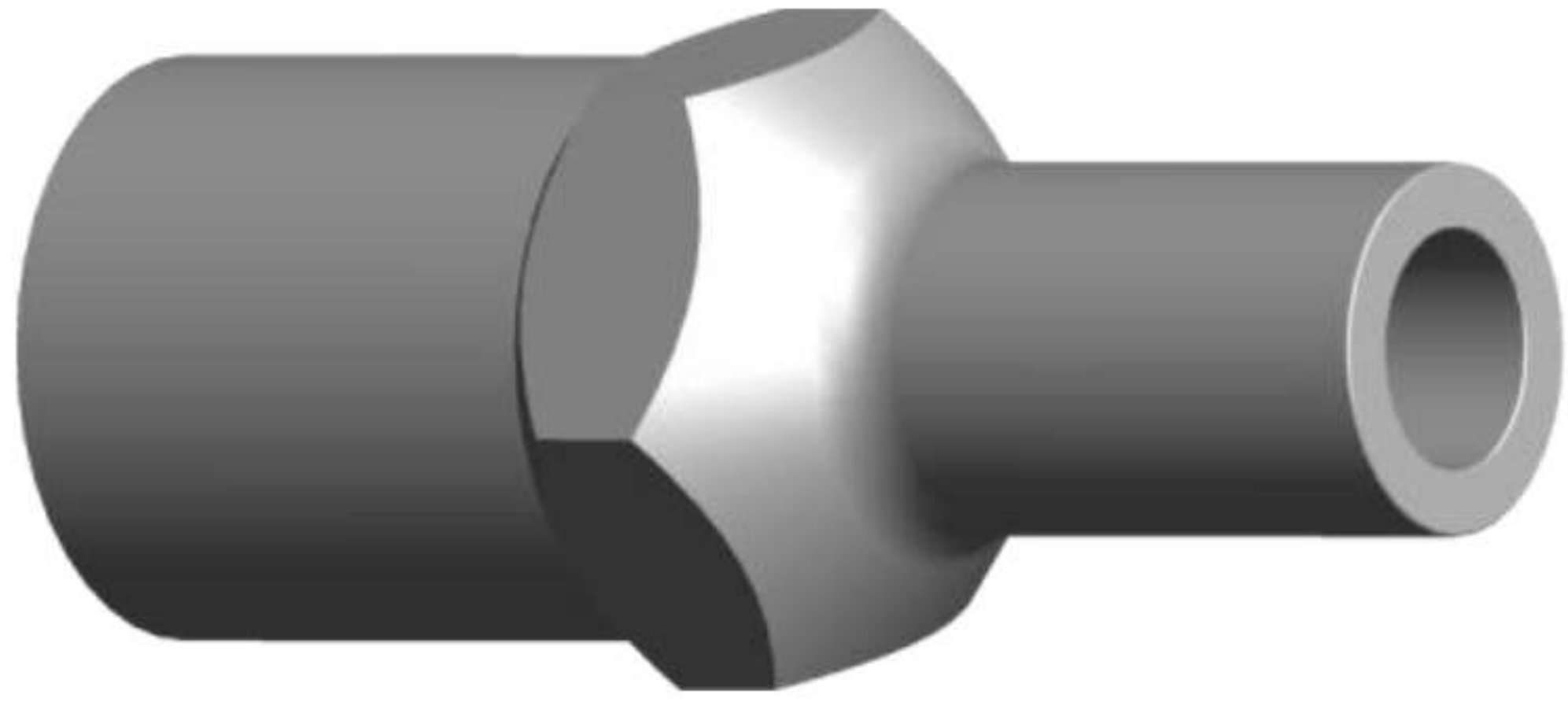
1-1/4" NPS and Larger

Pipe Size	A	B	C	D	Wt. Ea.							
					Std	XH	160	XXH				
1/2 X 1/8	2.750	0.840	0.405	0.875	N/A	0.33	0.50	0.50				
1/2 X 1/4			0.540									
1/2 X 3/8			0.675									
3/4 X 1/8	3.000	1.050	0.405	1.062	N/A	0.50	0.75	0.75				
3/4 X 1/4			0.540									
3/4 X 3/8			0.675									
3/4 X 1/2	3.500	1.315	0.840	1.375	N/A	0.66	1.00	1.00				
1 X 1/8			0.405									
1 X 1/4			0.540									
1 X 3/8			0.675									
1 X 1/2	4.000	1.660	0.840	1.250	N/A	1.00	1.50	1.50				
1 X 3/4			1.050									
1-1/4 x 1/2			1.315	1.375								
1-1/4 x 3/4			1.660									
1-1/4 x 1	4.500	1.900	0.840	1.250	N/A	1.16	2.00	2.00				
1-1/2 x 1/2			1.050									
1-1/2 x 3/4			1.315	1.375								
1-1/2 x 1			1.660									
1-1/2 x 1-1/4	6.500	2.375	0.540	1.000	N/A	3.00	4.25	4.25				
2 x 1/4			0.675									
2 x 3/8			0.840	1.250								
2 x 1/2			1.050									
2 x 3/4			1.315	1.375								
2 x 1	1.660											
2 x 1-1/4	7.000	2.875	1.900	1.437	2.00	2.34	4.25	4.25				
2 x 1-1/2			2.375									
2-1/2 x 2			2.875									
3 x 3/4	8.000	3.500	1.050	1.250	N/A	3.50	8.00	8.00				
3 x 1			1.315						1.375			
3 x 2			2.375	1.500								
3 x 2-1/2	2.875	1.937	4.50		6.00	11.00	11.00					
4 x 3/4	9.000	4.500		1.050				1.250	N/A	10.00	18.00	18.00
4 x 1			1.315	1.375								
4 x 2			2.375		1.500							
4 x 2-1/2			2.875	1.937		7.50	10.00	18.00				
4 x 3			3.500	2.000								
5 x 3	11.000	5.563	3.500	2.000	11.50	17.00			N/A	N/A		
5 x 4			4.500				2.062					
6 x 2	12.000	6.625	2.375	1.500	17.00	25.00	N/A	N/A				
6 x 3			3.500						2.000			
6 x 4			4.500	2.062								
6 x 5			5.563	2.188								

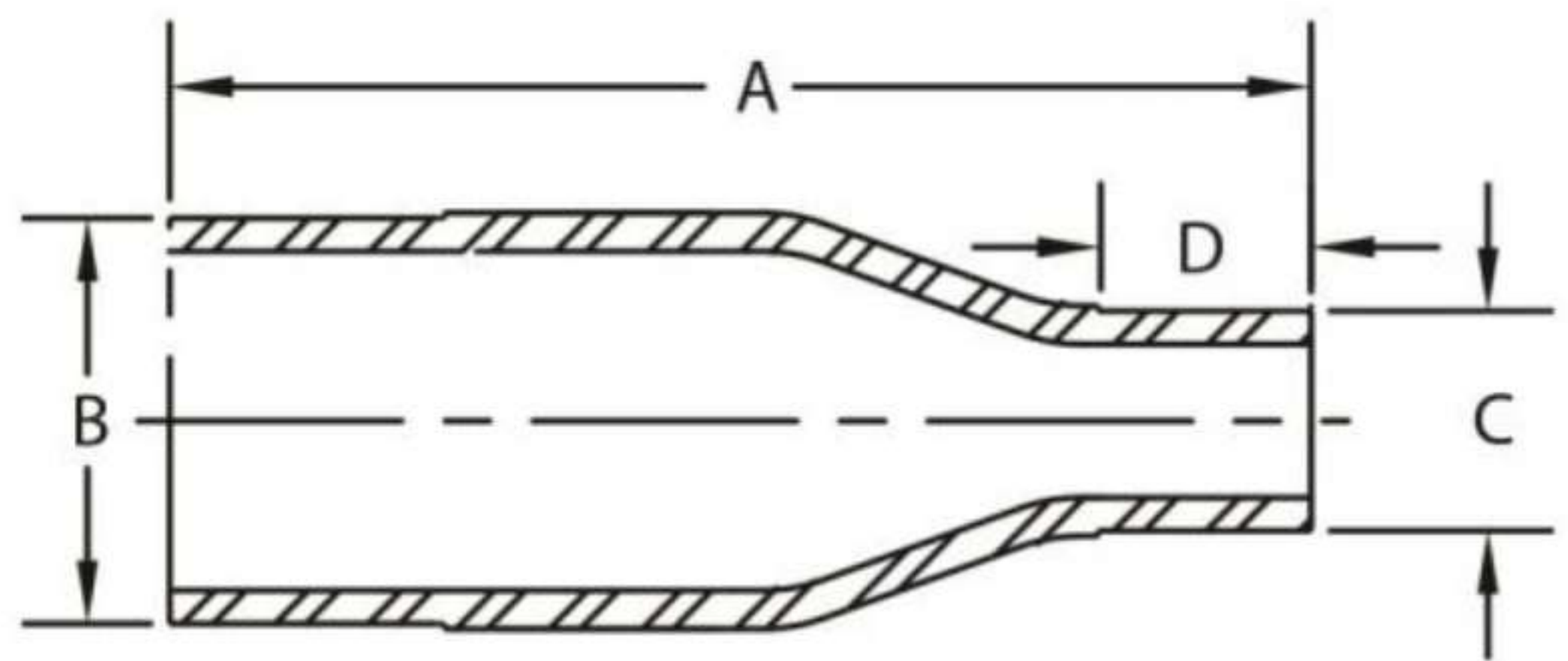
Swage Nipples - Plain Both Ends

ASTM A234, MSS SP-95

Creative Piping Solutions



1" NPS and Smaller



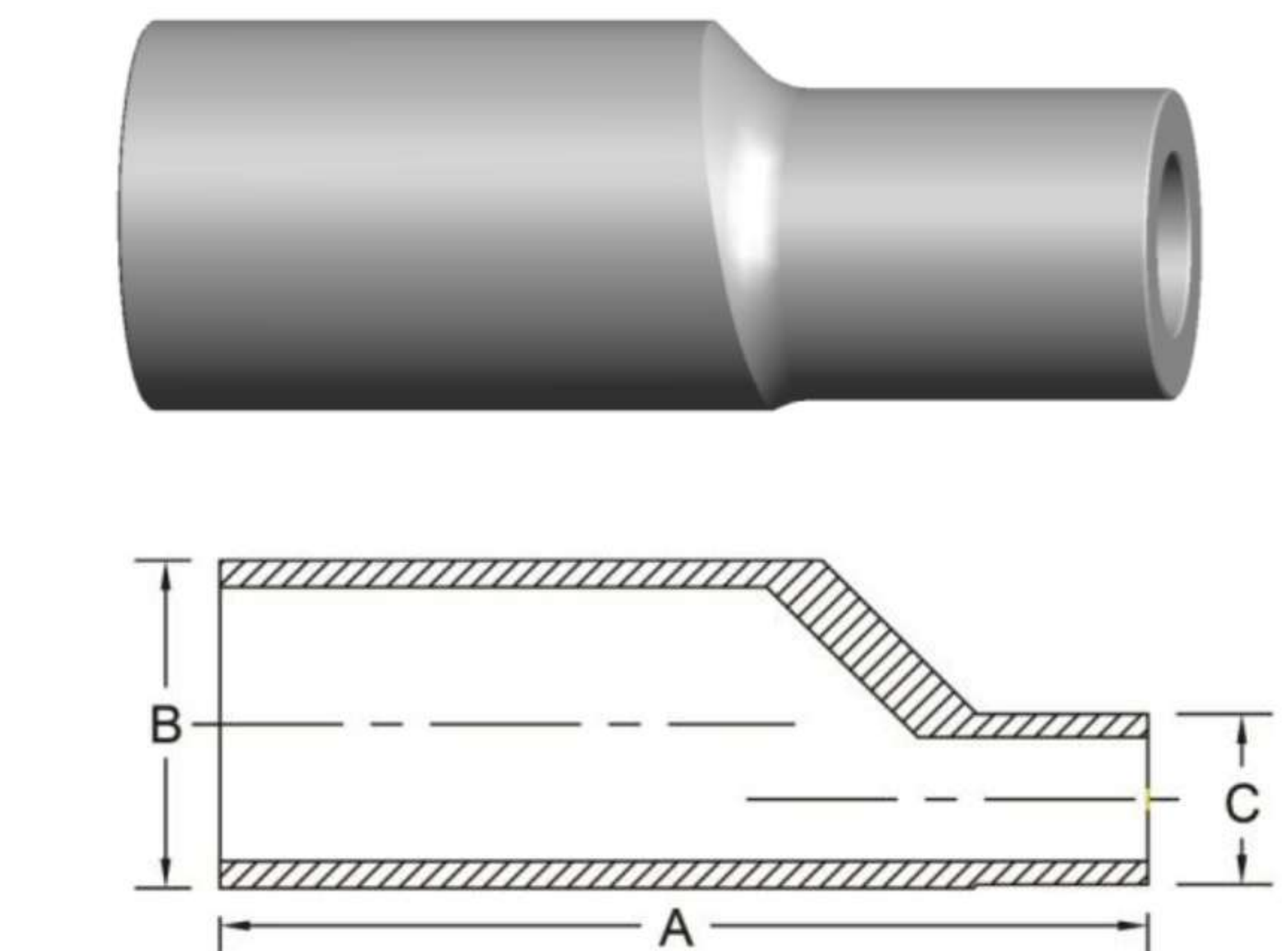
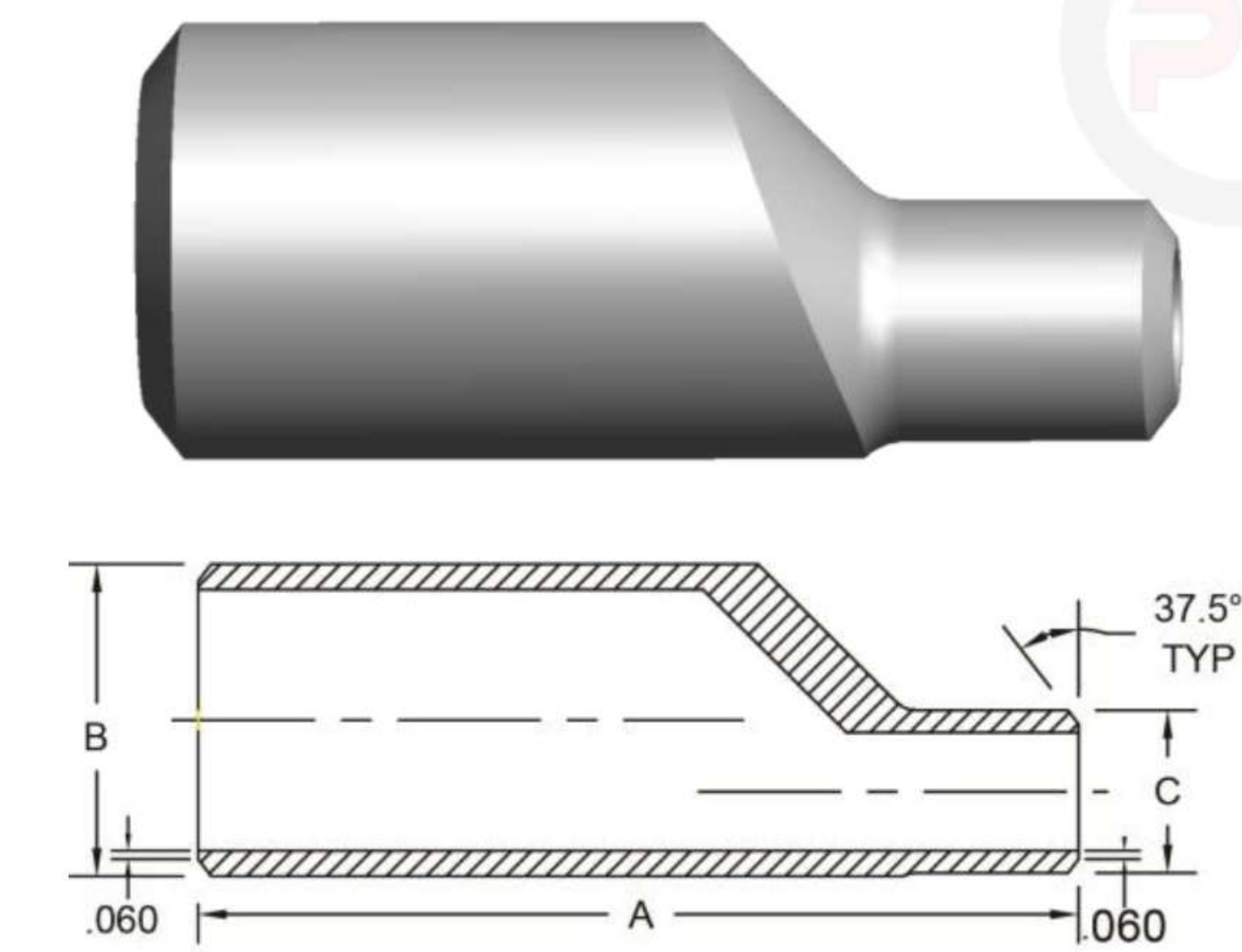
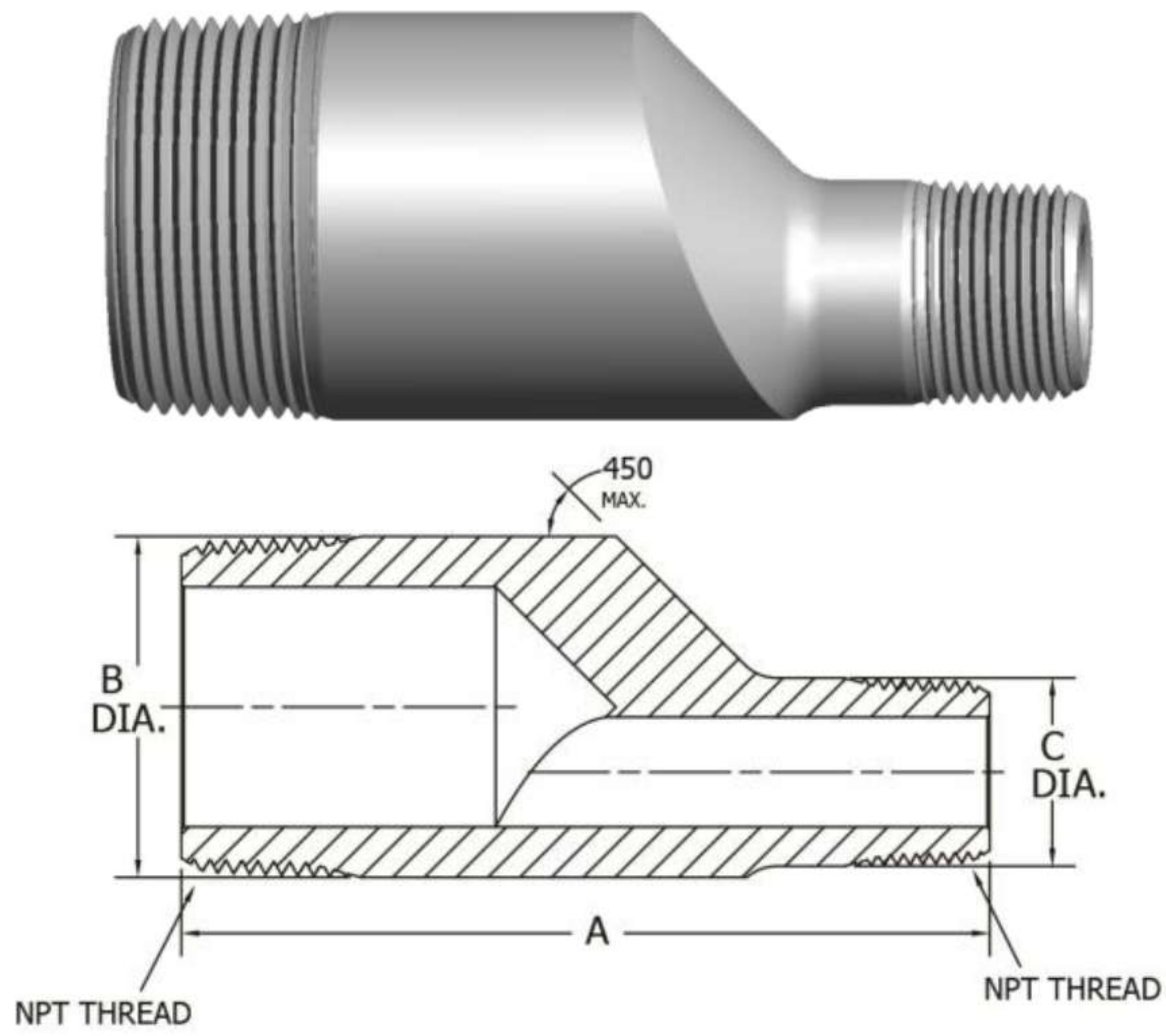
1-1/4" NPS and Larger

Pipe Size	A	B	C	D	Wt. Ea.			
					Std	XH	160	XXH
1/2 X 1/8	2.750	0.840	0.405	0.875	N/A	0.33	0.50	0.50
1/2 X 1/4			0.540					
1/2 X 3/8			0.675					
3/4 X 1/8	3.000	1.050	0.405	1.062	N/A	0.50	0.75	0.75
3/4 X 1/4			0.540					
3/4 X 3/8			0.675					
3/4 X 1/2			0.840					
1 X 1/8	3.500	1.315	0.405	1.375	N/A	0.67	1.00	1.00
1 X 1/4			0.540					
1 X 3/8			0.675					
1 X 1/2			0.840					
1 X 3/4			1.050					
1-1/4 x 1/2	4.000	1.660	0.840	1.250	N/A	1.00	1.50	1.50
1-1/4 x 3/4			1.050					
1-1/4 x 1			1.315					
1-1/2 x 1/2	4.500	1.900	0.840	1.250	N/A	1.16	2.00	2.00
1-1/2 x 3/4			1.050					
1-1/2 x 1			1.315					
1-1/2 x 1-1/4			1.660					
2 x 1/4	6.500	2.375	0.540	1.000	N/A	3.00	4.25	4.25
2 x 3/8			0.675	1.000				
2 x 1/2			0.840					
2 x 3/4			1.050	1.250				
2 x 1			1.315					
2 x 1-1/4			1.660	1.375				
2 x 1-1/2	1.900	1.437						
2-1/2 x 2	7.000	2.875	2.375	1.500	3.00	3.50	8.00	8.00
3 x 3/4	8.000	3.500	1.050	1.250	N/A	6.00	11.00	11.00
3 x 1			1.315	1.375				
3 x 1-1/2			1.900	1.437				
3 x 2			2.375	1.500				
3 x 2-1/2			2.875	1.937				
4 x 3/4	9.000	4.500	1.050	1.250	N/A	10.00	18.00	18.00
4 x 1			1.315	1.375				
4 x 2			2.375	1.500				
4 x 2-1/2			2.875	1.937				
4 x 3			3.500	2.000				
5 x 3	11.000	5.563	3.500	2.000	11.00	17.00	N/A	N/A
5 x 4			4.500	2.062				
6 x 2	12.000	6.625	2.375	1.500	17.00	25.00	N/A	N/A
6 x 3			3.500	2.000				
6 x 4			4.500	2.062				
6 x 5			5.563	2.188				

Swage Nipples - Eccentric TBE, BBE, PBE

ASTM A234, MSS SP-95, ASME B1.20.1, ANSI B16.25

Creative Piping Solutions



				Wt. Ea.			
				Std	XH	160	XXH
3/8 x 1/8	2.500	0.675	0.405	N/A	0.25	0.38	0.38
3/8 x 1/4			0.540				
1/2 x 1/4	2.750	0.840	0.540	N/A	0.33	0.50	0.50
1/2 x 3/8			0.675				
3/4 x 1/4	3.000	1.050	0.540	N/A	0.50	0.75	0.75
3/4 x 3/8			0.675				
3/4 x 1/2			0.840				
1 x 1/4	3.500	1.315	0.540	N/A	0.67	1.00	1.00
1 x 3/8			0.675				
1 x 1/2			0.840				
1 x 3/4			1.050				
1-1/4 x 1/2	4.000	1.660	0.840	N/A	1.00	1.50	1.50
1-1/4 x 3/4			1.050				
1-1/4 x 1			1.315				
1-1/2 x 1/2	4.500	1.900	0.840	N/A	1.16	2.00	2.00
1-1/2 x 3/4			1.050				
1-1/2 x 1			1.315				
1-1/2 x 1-1/4			1.660				
2 x 1/4	6.500	2.375	0.540	N/A	3.00	4.25	4.25
2 x 3/8			0.675				
2 x 1/2			0.840				
2 x 3/4			1.050	2.00			
2 x 1			1.315				
2 x 1-1/4			1.660				
2 x 1-1/2	1.900	7.000	2.875	3.00	3.50	8.00	8.00
2-1/2 x 1	1.315						
2-1/2 x 1-1/4	1.660						
2-1/2 x 1-1/2	1.900						
2-1/2 x 2	2.375	8.000	3.500	4.50	6.00	11.00	11.00
3 x 1/2	0.840						
3 x 3/4	1.050						
3 x 1	1.315						
3 x 1-1/4	1.660						
3 x 1-1/2	1.900						
3 x 2	2.375	9.000	4.500	7.50	10.00	18.00	18.00
3 x 2-1/2	2.875						
4 x 1	1.315						
4 x 1-1/4	1.660						
4 x 1-1/2	1.900						
4 x 2	2.375						
4 x 2-1/2	2.875						
4 x 3	3.500						

Combination of End Styles are also available