



CREATIVE PIPING SOLUTIONS

TUV Rheinland Audited Manufacturing Unit

Who We Are

Welcome to Creative Piping Solutions, your trusted partner for specialty piping solutions. With nearly two decades of experience, we manufacture and supply customized products ensuring pipeline integrity, mission-critical performance and budget efficiency.

Why Choose Us



**Deep Industry
Experience**

We are committed to providing innovative proven products further pipeline integrity solutions.



**Best Quality
Products**

Creative is committed to achieve highest quality in products adhere with the global emission standards requirements.

MANUFACTURER OF

- BUTTWELD PIPE FITTINGS
- FORGED FITTINGS
- FLANGES
- PIPE SPOOL FABRICATION
- SPLIT TEE AND BARRED TEE

PRODUCT RANGES



Butt weld Pipe Fittings

SIZE: 1/2" NPS to 24" NPS (Seamless) and 1/2" NPS to 96" (Welded)

TYPES: Elbow, Tee, Reducer, Return Bends, Stub-Ends, Cap, Cross, Miter Bend

WALL THICKNESS: Sch.5S to Sch. XXS

MATERIAL: Stainless Steel, Carbon Steel, Alloy Steel, Nickel, Monel, Inconel, Hastelloy, Cupronickel & Titanium, etc.

STANDARDS: ASME B16.9 / MSS SP 43 / B16.28 / MSS SP-75, etc.



Industrial Flanges

SIZE: 1/2" NPS to 64" NPS

TYPES: SLIP ON, WELD NECK, BLIND, LAP JOIN, SPECTACLE, SOCKET WELD, THREADED, ORIFICE-FACE TYPE: RAISED FACE AND RING JOINT

PRESSURE CLASS: 150# to 2500#

MATERIAL: Stainless Steel, Carbon Steel, Alloy Steel, Nickel, Monel, Inconel, Hastelloy, Cupronickel & Titanium, etc.

STANDARDS: ASME B16.5 / EN1092 / ANSI B16.47 / ANSI B16.48, etc.



Forge Fittings

SIZE: 1/4" NPS to 4" NPS- Threaded and Socket Weld.

TYPES: Elbow, Tee, Reducer, Cap, Cross, Nipple, Weldolet, Nipolet, Nipple, Coupling

CLASS: 3000# 6000# 9000#

MATERIAL: Stainless Steel, Carbon Steel, Alloy Steel, Nickel, Monel, Inconel, Hastelloy, Cupronickel & Titanium, etc.

STANDARDS: ASME 16.11, MSS SP-79, 83, 95, 97, BS 3799, etc.



Pipe Spools Fabrications

SIZE: 1/4" NPS to 96" NPS

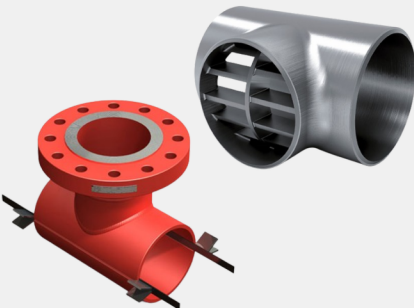
PRESSURE CLASS: 150# to 2500#

SCHEDULE/WALL THICKNESS: Sch.5S to Sch. XXS

MATERIAL: Stainless Steel, Carbon Steel, Alloy Steel, Nickel, Monel, Inconel, Hastelloy, Cupronickel & Titanium, etc.

COATING AND LINING: Epoxy and FBE Coating, Rubber Lining, PTFE Lining.

STANDARDS: ASME B31.3, ASME B31.1, and AS 4041, etc.



Hot Tapping Split Tee And Barred Tee

SIZE: 2" NPS to 48" NPS

TYPES: Equal Tee, Reducing Tee, Flanged Tee.

WALL THICKNESS: Sch.40 to Sch. XXS

MATERIAL: Stainless Steel, Carbon Steel, Alloy Steel, Nickel, Monel, Inconel, Hastelloy, Cupronickel & Titanium, etc.

STANDARDS: B31.1, B31.3, B31.4, B31.8, etc.



Ferrule Fittings

SIZE: 1/16"OD to 2"OD, OD to 50mm OD

TYPES: Twin Ferrule Instrumentation Fittings, Tube/ Pipe Clamps

THREAD: NPT, BSP, BSPT, UNF

PRESSURE RATING: 1000# 2000# 3000# 6000#

MATERIAL: Stainless Steel, Carbon Steel, Monel, Inconel, Hastelloy, etc.

STANDARDS: DIN 2353, etc.

"Unleashing Our Own Piping Experience"





Transforming the piping industry, today and tomorrow.

“Advanced Manufacturing Facility for better input”

INFRASTRUCTURE

Our factory is having total area of 1,00,000 Sq.Ft. with compound wall. Our manufacturing workshop covered area is 30,000 Sq.Ft. with EOT Crane. We being concerned for the quality right from raw materials identification to dispatch we have created additional space with covered area 10,000 Sq.Ft. for Inspection, Dispatch and Packaging. Also separate covered area 50,000 Sq.Ft. allotted for Raw Materials and Finished Stock for faster production and dispatch. Thus we are having 1,00,000 Sq.Ft. covered area for smooth identification and production of materials from raw materials to finished products.

Vision

- Total Customer Satisfaction
- Dedication to Quality Control
- Committed Delivery
- Continuous Improvement
- Adopting world's latest technology equipment
- Eliminating delays, errors and defects in materials and workmanship.

CONTACT US

HEAD OFFICE



Ground Floor Shop No. 8/12, Plot No. 25/33, Ardeshirdadi Street, C. P. Tank, Girgaon, Mumbai-400004 Maharashtra, India

📞 +91 9079367689

✉️ sales@creativepiping.com / export@creativepiping.com

FACTORY UNIT-I



Plot Number 1776, Road Number 22, Steel Market Kalamoli, Panvel, Navi Mumbai-410218 Maharashtra, India

📞 +91 8591195895

✉️ works@creativepiping.com / info@creativepiping.com

FACTORY UNIT-II



Plot No.12, Jorajina Muada Post, Talod, Sabarkantha-383215 Gujarat-India